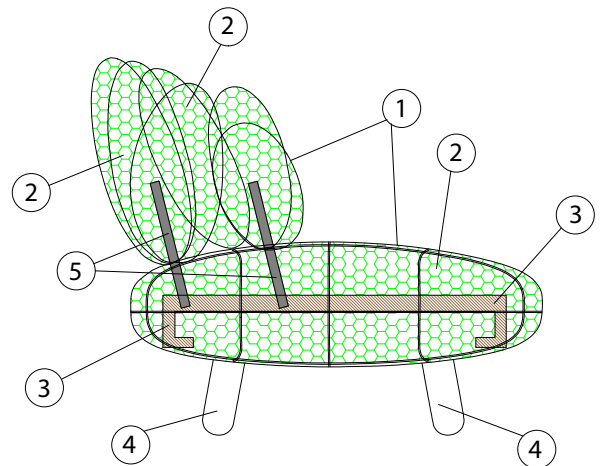


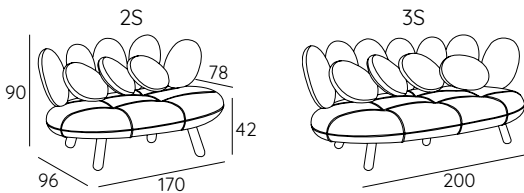


Jelly is a polisensorial, nostalgic, and futuristic couch that vaguely resembles a candy, conveying beautiful sensations and a light and a vague joy. The cylindrical legs lift him from the ground, sliding the figure and lightening the aesthetics, its rounded shapes. Jelly can be customized with an infinite combination of fabrics and colors. It can be easily placed in residential environments or private houses, interpreting it according to the context where it will be placed.

- 1 - dacron® fiber 100 gr;
- 2 - high resilience polyurethane foam of different densities;
- 3 - structural frame in solid firwood;
- 4 - natural beech feet;
- 5 - connecting metal bars.



DIMENSIONS:



LEGS:

P 58 h 22



WOODEN FEET FINISHINGS:





DESIGN SIMONE MICHELI

JELLY

TECHNICAL DETAILS:

Removable cover: NO	kg	m ³	mts
JELLY 2S	30	1.47	8.30
JELLY 3S	42	1.73	11.00

SUGGESTED FABRICS:



Lemming 29500



Luna/Z CS



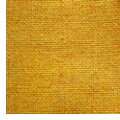
Amara



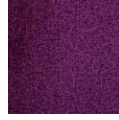
Mirage



Sprint



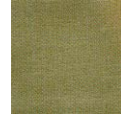
Sole CS



Nemi melange



Angel combo



Angel chevvy



Angel jumbo



Europost 2



Natur wool



Fenice



Polaris Pro



Happy



Parasol 100

The bielastic coatings adhere perfectly to the product

The velvets and the fake leathers dress the product with softness with small pence in the more rounded parts, which become the natural characteristic of this version.