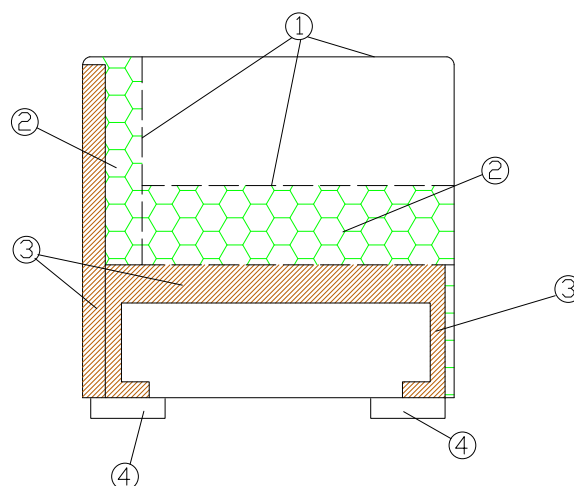


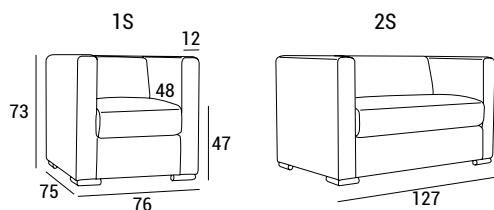


Both as an armchair or as a two-seater, 102 is a series conceived for waiting areas. A square and elegant profile defined by strong and geometric lines connotes this contract grade series that offers the right mix of style and comfort. Made of high quality fireproof materials, 102 is a contract grade series that can nonetheless find its place in a residential context. The chromed metal feet capture light and camouflage as they mirror the colors of the surrounding environment.

- 1 - dacron® fiber 100 gr;
- 2 - high resilience polyurethane foam of different densities;
- 3 - structural frame in plywood, non-structural parts in composite wood;
- 4 - plated chrome metal feet/stained wooden feet.



DIMENSIONS



FEET

P 07 h 4.5 P 62 h 4.5



TECHNICAL DETAILS

			 tessuto mtl H 140 cm	 pelle m ²
102 1P	35	0.43	4.70	8.34
102 2P	46	0.71	5.80	10.79

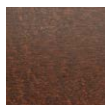


FEET FINISHINGS P 07

Standard

Optional

WENGÈ



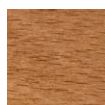
10

NATURAL



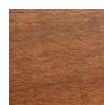
01

LIGHT WALNUT



04

WALNUT



05

BLACK



07/20

RAL COLOR OF YOUR CHOICE



PHOTO GALLERY



102 armchair



102 sofa

