



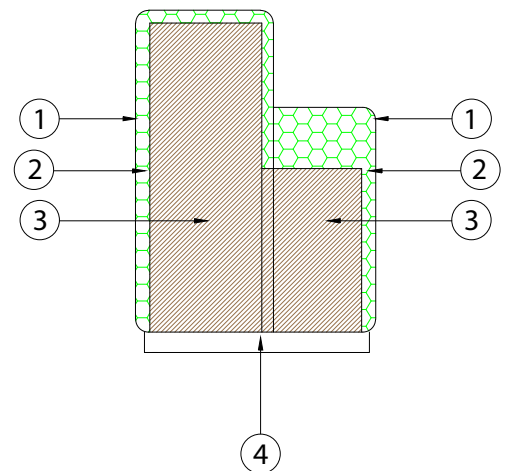
PERCY



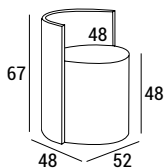
Percy is a small round armchair with a remarkable aesthetic character, which does not go unnoticed in any furnishing composition: from food areas to hotel rooms and waiting areas.

It is designed to meet the style and design requests of the most demanding customer. For this reason, like all the elements of the collection, it can be fully customized with fabrics and coverings chosen by the customer.

- 1 - dacron® fiber 100 gr;
- 2 - high resilience polyurethane foam of different densities;
- 3 - structural frame in plywood;
- 4 - plinth in powder coated laminate plywood.



DIMENSIONS



PLINTH

B 12 h 2



TECHNICAL DETAILS

			fabrics mtl H 140 cm	leather m ²
PERCY	11	0.18	2.10	3.91



PERCY

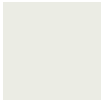
PLINTH FINISHINGS

Standard



ARPA 0509

Optional



ARPA 0003



ARPA 0211



WENGÈ

ARPA 4485 GHI



POLISHED BRASS

ARPA 2006 LUC



SATIN GOLDEN
ALUMINIUM

ARPA 2003 SAT



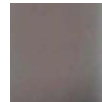
SATIN ALUMINIUM

ARPA 2000 SAT



COTTON GUNMETAL

ARPA 2007 CT



SATIN ALU STEEL

ARPA 2012 SAT

SATIN COPPER CA



ARPA 2008 SAT