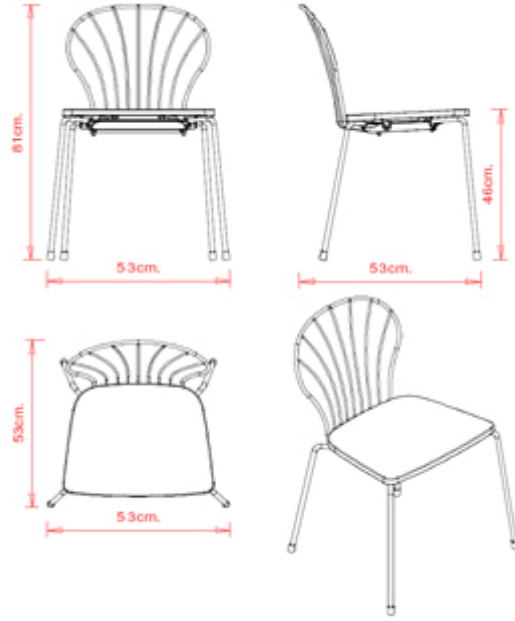


Flint 535-B

FLINT COLLECTION:
Flint 535-A, Flint 535-AM, Flint 535-B,
Flint 535-BM, Flint 549, Flint 549M,



Chair with 4 legs steel frame and backrest,
polyamide or Iroko wood seat.

STACKABLE

4

WEIGHT

5,3 Kg

PACK

0,39 m₃

PIECES PER BOX

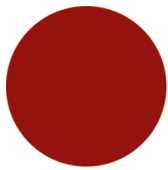
4

FINISHES SEATING

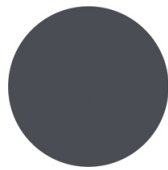
PA POLYAMIDE



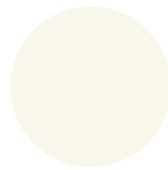
NCS S4005-Y20R
Turtle-dove
≡



RAL 3003 Ruby red
(Available while stocks
last)
≡



RAL 7016 Anthracite grey
≡



NCS S0500-N
Pure white
≡

FRAMES

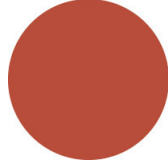
AC STEEL



NCS S4000-N VR White aluminium



NCS S9000-N VR Jet black



NCS S3060-Y80R Coral red



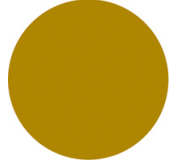
CR Chrome



NCS S9000-N VR Matt Jet Black



VR Rough metallic bronze



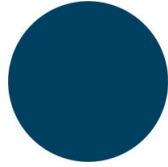
NCS S3060-Y Curry



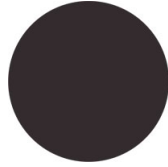
NCS S7020-G50Y Olive green



NCS S4050-B40G Water blue



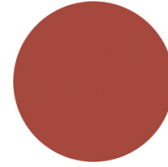
NCS S6030-B Capri blue



NCS S8005-Y20R Brown



NCS s0502-b VR Traffic white



NCS S4040-R Marsala



VR Pewter



NCS S0500-N VR Pure white



NCS S7502-B VR Anthracite grey



CERTIFICATIONS

- > UNI/EN 16139:2013 - Par.4.1. Generale. Par.4.2. Cesoiamento (07/07/15)
- > UNI/EN 16139:2013 - Par.4.3. Stabilità (07/07/15) > UNI/EN 16139:2013 - Prova 1. Carico statico sedile e schienale: 2-Uso estremo (07/07/15)
- > UNI/EN 16139:2013 - Prova 2. Carico statico sul fronte anteriore: 2-Uso estremo (07/07/15)
- > UNI/EN 16139:2013 - Prova 3. Carico verticale sullo schienale: 2-Uso estremo (07/07/15)
- > UNI/EN 16139:2013 - Prova 8. Prova di fatica sedile e schienale: 2-Uso estremo (07/07/15)
- > UNI/EN 16139:2013 - Prova 9. Prova di fatica sul bordo anteriore: 2-Uso estremo (07/07/15)

USES

coffee & restaurants, retail, outdoor,