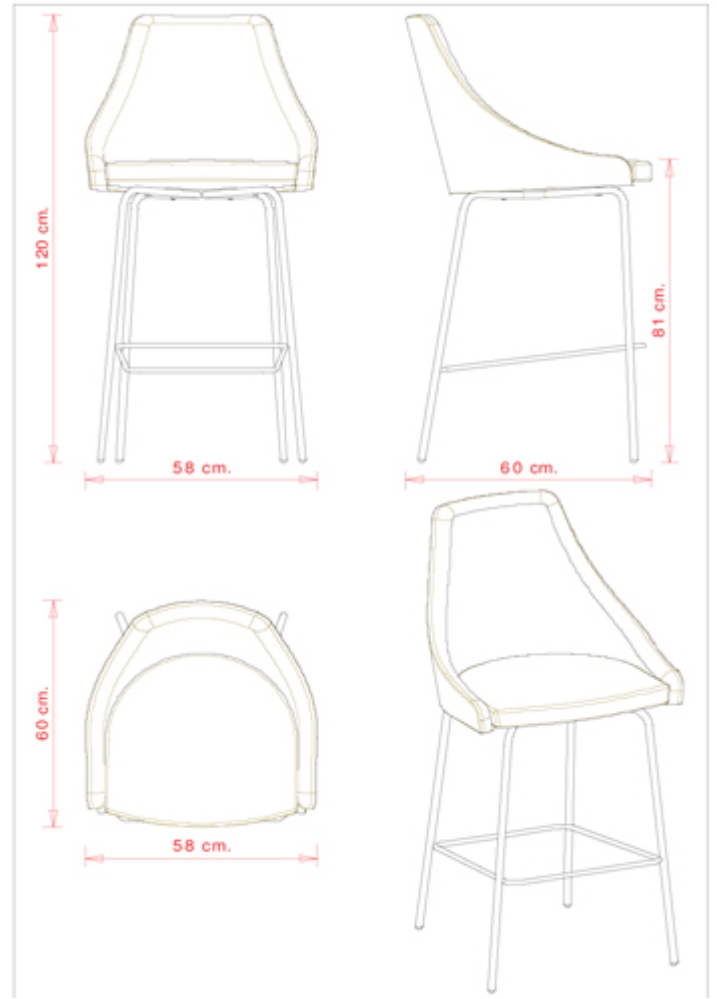


## Kontea 307

KONTEA COLLECTION:  
Kontea 586, Kontea 587, Kontea 588, Kontea 590, Kontea 307,  
Kontea 310,



Barstool with 4 legs steel frame. Upholstered seat and back.

**WEIGHT**

9,3 kg

**PACK**

0,44 m<sup>3</sup>

**PIECES PER BOX**

1

## FINISHES SEATING

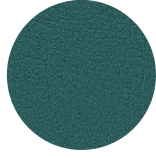
### TE FABRICS



Melva  
+ 5 colors



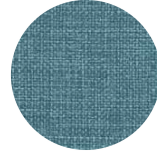
Fortis + 8 colori



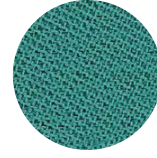
Inca  
+ 14 colors



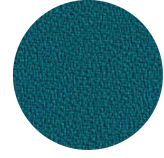
Amsterdam  
+ 8 colors



Medley Gabriel  
+ 15 colors



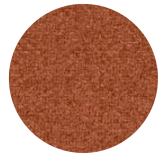
Chili Gabriel  
+ 8 colors



Mirage  
+ 8 colors



Convert  
+ 7 colors



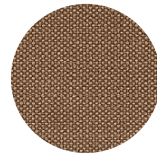
Fenice  
+ 8 colors



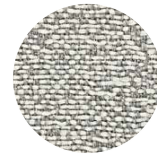
Mood Gabriel  
+ 8 colors



Valencia  
+ 14 colors



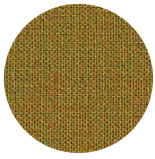
Reviva Hero  
+ 10 colors



Fabthirthy Rubelli  
+ 8 colors



Ocean Mastrotto  
+ 15 colors



Remix 3 Kvadrat  
+ 15 colors

## NOTE

### Resources

3ds



| dwg



## FRAMES

### AL VR PAINTED ALUMINIUM



NCS S4040-R  
Marsala



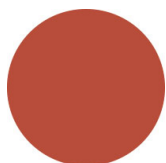
### AC STEEL



NCS S4000-N VR White  
aluminium



NCS S9000-N VR Jet  
black



NCS S3060-Y80R  
Coral red



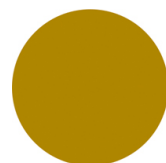
CR Chrome



NCS S9000-N VR Matt  
Jet Black



VR Rough metallic  
bronze



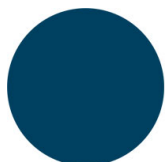
NCS S3060-Y Curry



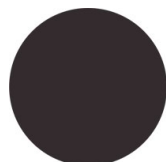
NCS S7020-G50Y  
Olive green



NCS S4050-B40G  
Water blue



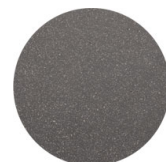
NCS S6030-B  
Capri blue



NCS S8005-Y20R  
Brown



NCS s0502-b VR Traffic  
white



VR Pewter



NCS S0500-N VR Pure  
white



NCS S7502-B VR  
Anthracite grey



## USES

coffee & restaurants, hotels, educational, entertainment, travel, office and waiting areas, retail, health care,