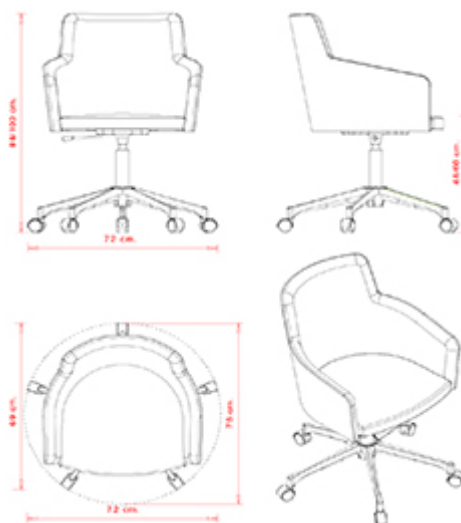


Marka 569-DR

MARKA COLLECTION:

Marka 566, Marka 567, Marka 568, Marka 569-DP, Marka 569-DR, Marka 570,



Swivel armchair with 5 ways on castors, aluminium frame. Upholstered seat and back.

WEIGHT

12 kg

PACK

0,50 m³

PIECES PER BOX

1

FINISHES SEATING

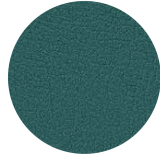
TE FABRICS



Melva
+ 5 colors



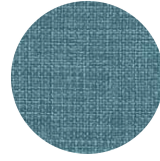
Fortis + 8 colori



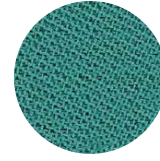
Inca
+ 14 colors



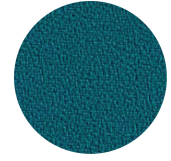
Amsterdam
+ 8 colors



Medley Gabriel
+ 15 colors



Chili Gabriel
+ 8 colors



Mirage
+ 8 colors



Convert
+ 7 colors



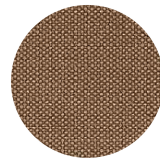
Fenice
+ 8 colors



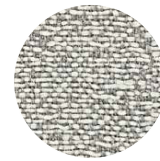
Mood Gabriel
+ 8 colors



Valencia
+ 14 colors



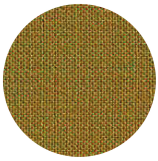
Reviva Hero
+ 10 colors



Fabthirty Rubelli
+ 8 colors



Ocean Mastrotto
+ 15 colors



Remix 3 Kvadrat
+ 15 colors

NOTE

Resources

[3ds](#)



| [dwg](#)



FRAMES

AL VR PAINTED ALUMINIUM



NCS S9000-N VR Jet black



AL PSH POLISHED ALUMINIUM



Polished aluminium

CERTIFICATIONS

- > UNI/EN 16139:2013 - Par.4.1. Generale. 4.2 Cesoiamento e schiacciamento (20/10/16)
- > UNI/EN 16139:2013 - Par.6. Prova 1. Carico statico sedile e schienale: 2-Uso estremo (20/10/16)
- > UNI/EN 16139:2013 - Par.6. Prova 10. Prova di durata dei braccioli: 2-Uso estremo (15/11/16)
- > UNI/EN 16139:2013 - Par.6. Prova 14. Prova di urto sul sedile: 2-Uso estremo (16/02/17)
- > UNI/EN 16139:2013 - Par.6. Prova 15. Prova di urto sullo schienale: 2-Uso estremo (16/02/17)
- > UNI/EN 16139:2013 - Par.6. Prova 16. Prova di urto sul bracciolo: 2-Uso estremo (16/02/17)
- > UNI/EN 16139:2013 - Par.6. Prova 2. Carico statico sul fronte anteriore: 2-Uso estremo (20/10/16)
- > UNI/EN 16139:2013 - Par.6. Prova 3. Carico verticale sullo schienale: 2-Uso estremo (20/10/16)
- > UNI/EN 16139:2013 - Par.6. Prova 5. Carico statico laterale sui braccioli: 2-Uso estremo (20/10/16)
- > UNI/EN 16139:2013 - Par.6. Prova 6. Carico statico verticale verso il basso sui braccioli: 2-Uso estremo (20/10/16)
- > UNI/EN 16139:2013 - Par.6. Prova 8. Prova di fatica sedile e schienale: 2-Uso estremo (07/11/16)
- > UNI/EN 16139:2013 - Par.6. Prova 9. Prova di fatica del bordo anteriore: 2-Uso estremo (12/11/16)

USES

office and waiting areas, retail,