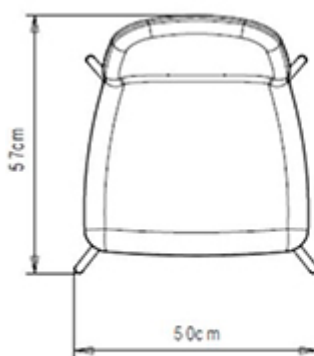
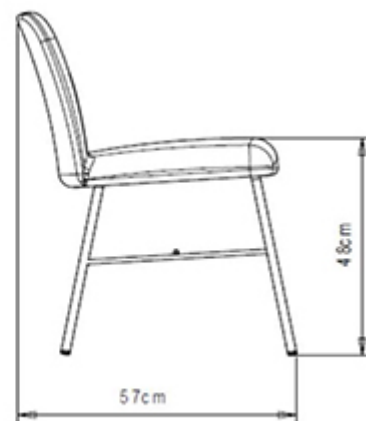
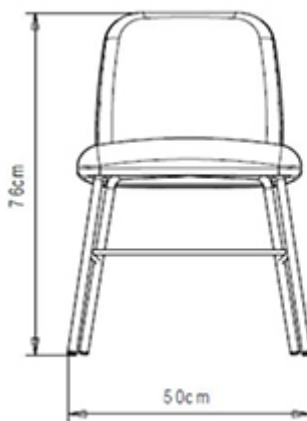



## Myra 652

### MYRA COLLECTION:

Myra 652, Myra 654, Myra 653, Myra 654B, Myra 655, Myra 656, Myra 657, Myra 658, Myra 658B, Myra 659, Myra 660, Myra 667, Myra 668, Myra 669, Myra 674, Myra 675, Myra 677, Myra 676, Myra 678, Myra 679, Myra 680, Myra 681, Myra 682, Myra 683,



4-leg chair with steel frame and shell upholstered in fabric. Available in polyurethane injected foam in compliance with UK fire regulations. 

#### WEIGHT

7,1 Kg

#### PACK

0,33 m<sup>3</sup>

#### PIECES PER BOX

2

## FINISHES SEATING

### TE FABRICS



Melva  
+ 5 colors



Fortis + 8 colori



Inca  
+ 14 colors



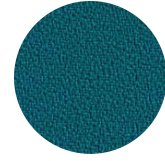
Amsterdam  
+ 8 colors



Medley Gabriel  
+ 15 colors



Chili Gabriel  
+ 8 colors



Mirage  
+ 8 colors



Convert  
+ 7 colors



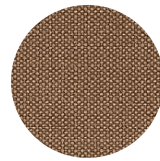
Fenice  
+ 8 colors



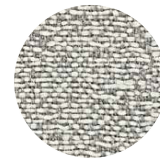
Mood Gabriel  
+ 8 colors



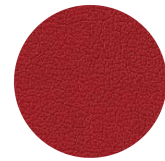
Valencia  
+ 14 colors



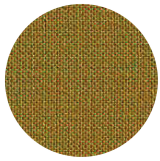
Reviva Hero  
+ 10 colors



Fabthirty Rubelli  
+ 8 colors



Ocean Mastrotto  
+ 15 colors



Remix 3 Kvadrat  
+ 15 colors

## NOTE

### Resources

[3ds](#)  | [dwg](#) 

Stichings available in red, rope and according to fabric colour.



## FRAMES

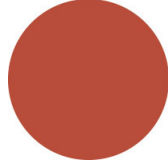
### AC STEEL



NCS S4000-N VR White aluminium



NCS S9000-N VR Jet black



NCS S3060-Y80R Coral red



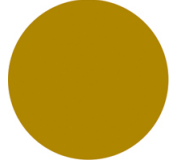
CR Chrome



NCS S9000-N VR Matt Jet Black



VR Rough metallic bronze



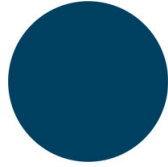
NCS S3060-Y Curry



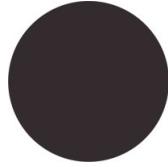
NCS S7020-G50Y Olive green



NCS S4050-B40G Water blue



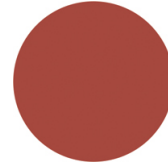
NCS S6030-B Capri blue



NCS S8005-Y20R Brown



NCS s0502-b VR Traffic white



NCS S4040-R Marsala



VR Pewter



NCS S0500-N VR Pure white



NCS S7502-B VR Anthracite grey



## USES

coffee & restaurants, hotels,