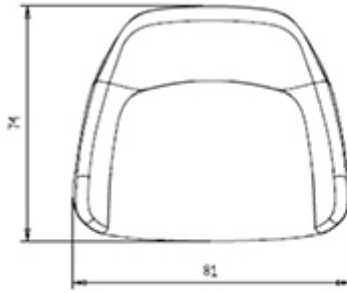
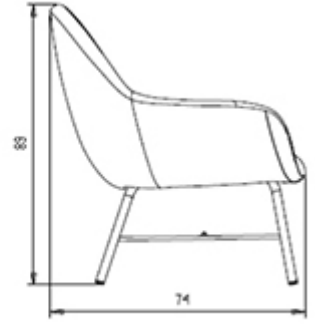
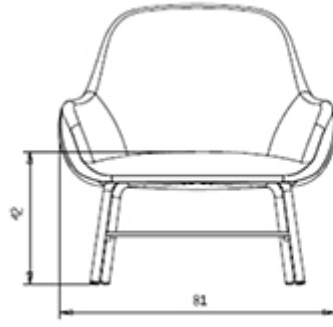


Myra 655

MYRA COLLECTION:

Myra 652, Myra 654, Myra 653, Myra 654B, Myra 655, Myra 656, Myra 657, Myra 658, Myra 658B, Myra 659, Myra 660, Myra 667, Myra 668, Myra 669, Myra 674, Myra 675, Myra 677, Myra 676, Myra 678, Myra 679, Myra 680, Myra 681, Myra 682, Myra 683,



4-leg lounge chair with steel frame and upholstered shell in fabric. Available in polyurethane injected foam in compliance with UK fire regulations.

WEIGHT

16 kg

PACK

0,60 m³

PIECES PER BOX

1

FINISHES SEATING

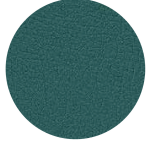
TE FABRICS



Melva
+ 5 colors



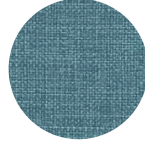
Fortis + 8 colori



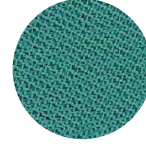
Inca
+ 14 colors



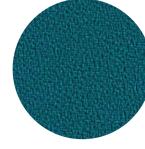
Amsterdam
+ 8 colors



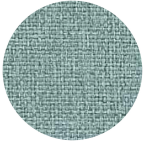
Medley Gabriel
+ 15 colors



Chili Gabriel
+ 8 colors



Mirage
+ 8 colors



Convert
+ 7 colors



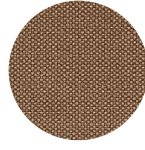
Fenice
+ 8 colors



Mood Gabriel
+ 8 colors



Valencia
+ 14 colors



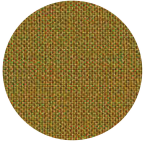
Reviva Hero
+ 10 colors



Fabthirty Rubelli
+ 8 colors



Ocean Mastrotto
+ 15 colors



Remix 3 Kvadrat
+ 15 colors

NOTE

Resources

3ds



| dwg



Stichings available in red, rope and according to fabric colour.



FRAMES

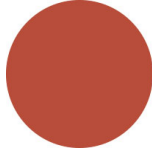
AC STEEL



NCS S4000-N VR White
aluminium
☀️



NCS S9000-N VR Jet black
☀️



NCS S3060-Y80R
Coral red
☀️



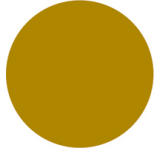
CR Chrome



NCS S9000-N VR Matt Jet
Black
☀️



VR Rough metallic
bronze
☀️



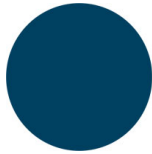
NCS S3060-Y Curry
☀️



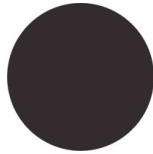
NCS S7020-G50Y
Olive green
☀️



NCS S4050-B40G
Water blue
☀️



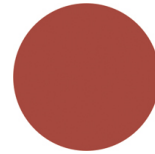
NCS S6030-B
Capri blue
☀️



NCS S8005-Y20R
Brown
☀️



NCS s0502-b VR Traffic
white
☀️



NCS S4040-R
Marsala
☀️



VR Pewter
☀️



NCS S0500-N VR Pure white
☀️



NCS S7502-B VR Anthracite
grey
☀️

CERTIFICATIONS

- > UNI/EN 16139:2013 - Par.4 Sicurezza. 4.3 Stabilità (07/10/16)
- > UNI/EN 16139:2013 - Par.4.1. Generale. 4.2 Cesoiamento e schiacciamento (07/10/16)
- > UNI/EN 16139:2013 - Par.6. Prova 1. Carico statico sedile e schienale: 2-Uso estremo (07/10/16)
- > UNI/EN 16139:2013 - Par.6. Prova 10. Prova di durata dei braccioli: 2-Uso estremo (30/10/16)
- > UNI/EN 16139:2013 - Par.6. Prova 12. Prova di carico statico delle gambe anteriori: 2-Uso estremo (03/11/16)
- > UNI/EN 16139:2013 - Par.6. Prova 13. Prova di carico statico delle gambe laterali: 2-Uso estremo (03/11/16)
- > UNI/EN 16139:2013 - Par.6. Prova 14. Prova di urto sul sedile: 2-Uso estremo (03/11/16)
- > UNI/EN 16139:2013 - Par.6. Prova 15. Prova di urto sullo schienale: 2-Uso estremo (03/11/16)
- > UNI/EN 16139:2013 - Par.6. Prova 16. Prova di urto sul bracciolo: 2-Uso estremo (03/11/16)
- > UNI/EN 16139:2013 - Par.6. Prova 2. Carico statico sul fronte anteriore: 2-Uso estremo (07/10/16)
- > UNI/EN 16139:2013 - Par.6. Prova 3. Carico verticale sullo schienale: 2-Uso estremo (07/10/16)
- > UNI/EN 16139:2013 - Par.6. Prova 5. Carico statico laterale sui braccioli: 2-Uso estremo (07/10/16)
- > UNI/EN 16139:2013 - Par.6. Prova 6. Carico statico verticale verso il basso sui braccioli: 2-Uso estremo (07/10/16)
- > UNI/EN 16139:2013 - Par.6. Prova 8. Prova di fatica sedile e schienale: 2-Uso estremo (18/10/16)
- > UNI/EN 16139:2013 - Par.6. Prova 9. Prova di fatica del bordo anteriore: 2-Uso estremo (24/10/16)

USES

coffee & restaurants, hotels, office and waiting areas, retail,