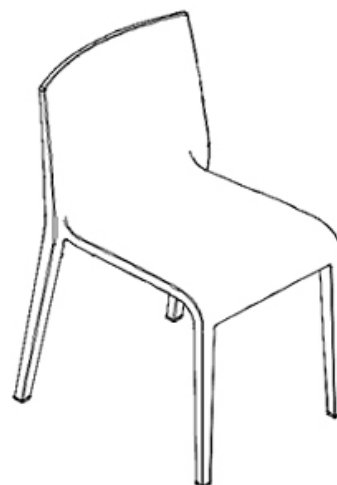
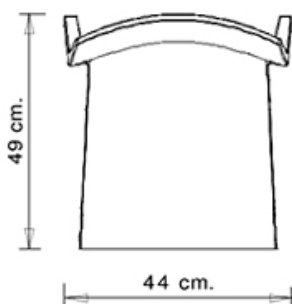
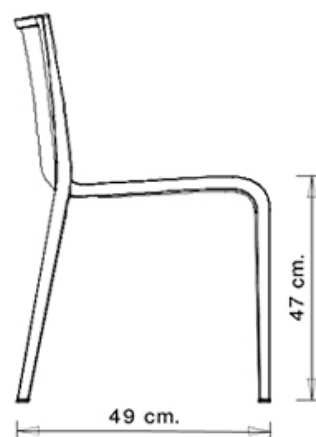
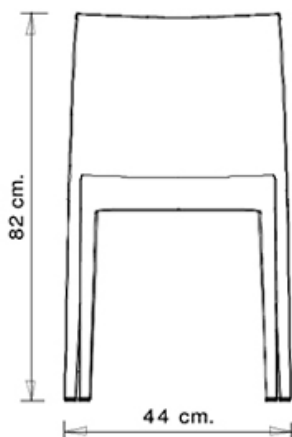


Marc Sadler

Nassau 533

NASSAU COLLECTION:

Nassau 533, Nassau 533N, Nassau 533M, Nassau 534, Nassau 534N, Nassau 534M, Nassau 537B, Nassau 537, Trolley 536,



Monobloc chair in polypropylene made using the injected airmoulding technology. Nassau 533 in the fire retardant version is available only in Pure white RAL 9010.

STACKABLE

8

WEIGHT

4,2 kg

PACK

0,29 m³

PIECES PER BOX

4

FINISHES SEATING

PP POLYPROPYLENE



NCS S0500-N
Pure white



NCS S7020-G50Y
Olive green



NCS S4005-Y50R Turtle-dove



NCS S7502-B
Anthracite grey



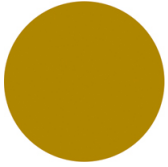
NCS S4005-B20G
Squirrel grey



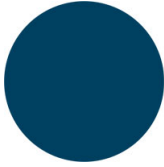
NCS S9000-N
Jet black



NCS S4040-R
Marsala



NCS S3060-Y Curry





NCS S6030-B
Capri blue



NOTE

Resources

3ds  | dwg 

Shell in **olive green** is made of **100% recycled polypropylene** from industrial waste.

CERTIFICATIONS

- > ANSI/BIFMA X5.1-2011 - Par.11. Prove di fatica sulla seduta (25/03/16)
- > ANSI/BIFMA X5.1-2011 - Par.12. Stabilità (30/03/16)
- > ANSI/BIFMA X5.1-2011 - Par.16. Prove di fatica sullo schienale (13/04/16)
- > ANSI/BIFMA X5.1-2011 - Par.18. Sforzo statico sulla gambe (18/04/16)
- > ANSI/BIFMA X5.1-2011 - Par.6. Sforzo statico sullo schienale (11/03/16)
- > ANSI/BIFMA X5.1-2011 - Par.8. Caduta di un peso (11/03/16)

USES

coffee & restaurants, office and waiting areas, outdoor,