

## Nassau 534N



### NASSAU COLLECTION:

Nassau 533, Nassau 533N, Nassau 533M, Nassau 534, Nassau 534N, Nassau 534M, Nassau 537B, Nassau 537, Trolley 536,



Monobloc armchair in polypropylene made using the injected air-moulding technology. Upholstered seat.

#### STACKABLE

4

#### WEIGHT

6 Kg

#### PACK

0,32 m<sup>3</sup>

#### PIECES PER BOX

2

## FINISHES SEATING

### PP POLYPROPYLENE



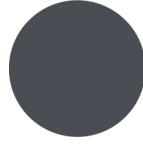
NCS S0500-N  
Pure white  
≡



NCS S7020-G50Y  
Olive green  
≡



NCS S4005-Y50R  
Turtle-dove  
≡



NCS S7502-B  
Anthracite grey  
≡



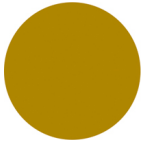
NCS S4005-B20G  
Squirrel grey  
≡



NCS S9000-N  
Jet black  
≡



NCS S4040-R  
Marsala  
≡



NCS S3060-Y  
Curry  
≡



NCS S6030-B  
Capri blue  
≡

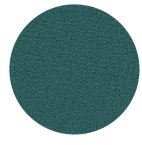
### TE FABRICS



Melva  
+ 5 colors



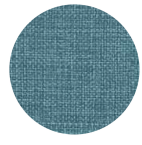
Fortis + 8 colori



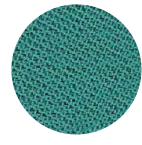
Inca  
+ 14 colors



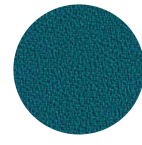
Amsterdam  
+ 8 colors



Medley Gabriel  
+ 15 colors



Chili Gabriel  
+ 8 colors



Mirage  
+ 8 colors



Convert  
+ 7 colors



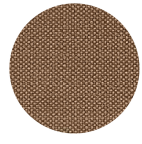
Fenice  
+ 8 colors



Mood Gabriel  
+ 8 colors



Valencia  
+ 14 colors



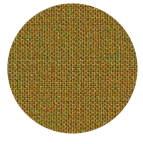
Reviva Hero  
+ 10 colors



Fabthirty Rubelli  
+ 8 colors



Ocean Mastrotto  
+ 15 colors



Remix 3 Kvadrat  
+ 15 colors

## NOTE

### Resources

3ds | | dwg |

Shell in **olive green** is made of **100% recycled polypropylene** from industrial waste.

## **USES**

---

coffee & restaurants, hotels, educational, entertainment, office and waiting areas, retail,