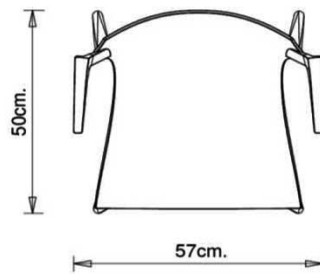
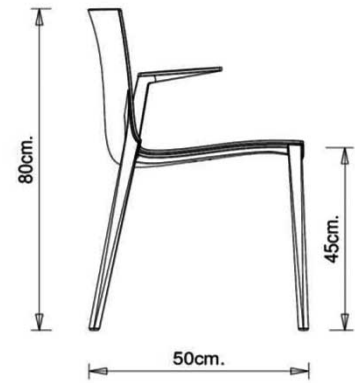
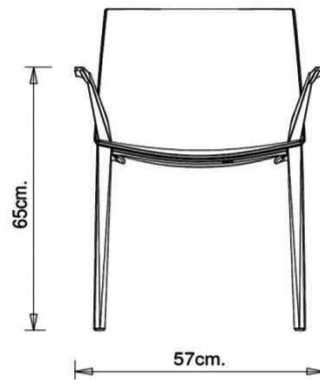


## Palau 1021

PALAU COLLECTION:  
Palau 1020, Palau 1021,



Monobloc armchair in polypropylene made using the injected air-moulding technology.

**STACKABLE**

6

**WEIGHT**

4,1 Kg

**PACK**

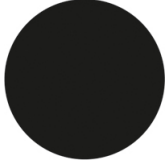
0,36 m<sup>3</sup>

**PIECES PER BOX**

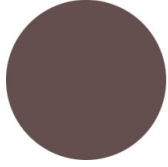
4

## FINISHES SEATING

### PP POLYPROPYLENE



NCS S9000-N  
Jet black  
≡



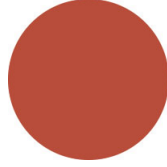
NCS S6502-R Clay  
≡



NCS S7020-G50Y  
Olive green  
≡



NCS S0500-N  
Pure white  
≡



NCS S3060-Y80R  
Coral red  
≡



NCS S4020-B10G Dusty blue  
≡

## NOTE

### Resources

[3ds](#)



| [dwg](#)



## USES

coffee & restaurants, travel, retail, outdoor,