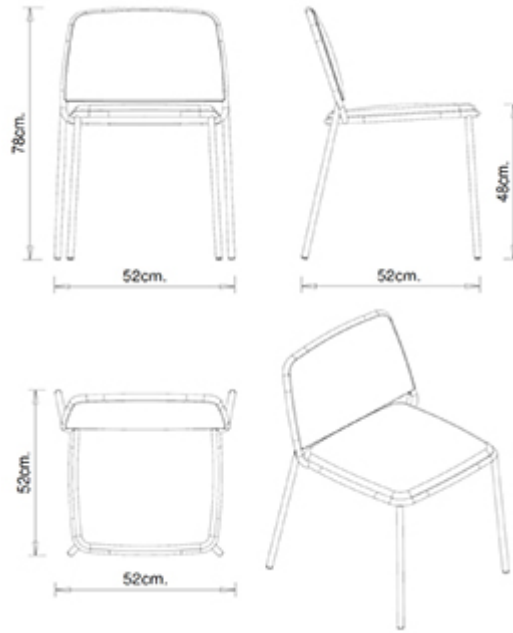


## Ring 670

RING COLLECTION:

Ring 670, Ring 671, Ring 672,



Chair with steel frame, 4 legs. Upholstered seat and back.

**STACKABLE**

4

**WEIGHT**

7,1 Kg

**PACK**

0,39 m<sup>3</sup>

**PIECES PER BOX**

4

## FINISHES SEATING

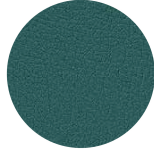
### TE FABRICS



Melva  
+ 5 colors



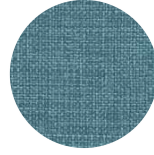
Fortis + 8 colori



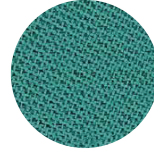
Inca  
+ 14 colors



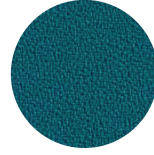
Amsterdam  
+ 8 colors



Medley Gabriel  
+ 15 colors



Chili Gabriel  
+ 8 colors



Mirage  
+ 8 colors



Convert  
+ 7 colors



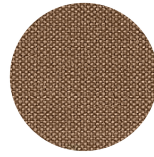
Fenice  
+ 8 colors



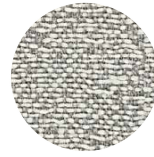
Mood Gabriel  
+ 8 colors



Valencia  
+ 14 colors



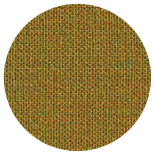
Reviva Hero  
+ 10 colors



Fabthirty Rubelli  
+ 8 colors



Ocean Mastrotto  
+ 15 colors



Remix 3 Kvadrat  
+ 15 colors

## NOTE

### Resources

[3ds](#)



| [dwg](#)



## FRAMES

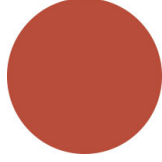
### AC STEEL



NCS S4000-N VR White  
aluminium



NCS S9000-N VR Jet  
black



NCS S3060-Y80R  
Coral red



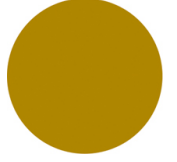
CR Chrome



NCS S9000-N VR Matt  
Jet Black



VR Rough metallic  
bronze



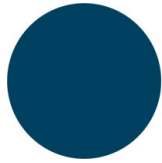
NCS S3060-Y Curry



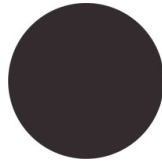
NCS S7020-G50Y  
Olive green



NCS S4050-B40G  
Water blue



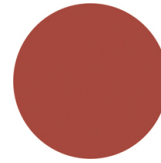
NCS S6030-B  
Capri blue



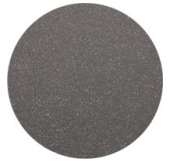
NCS S8005-Y20R  
Brown



NCS s0502-b VR Traffic  
white



NCS S4040-R  
Marsala



VR Pewter



NCS S0500-N VR Pure  
white



NCS S7502-B VR  
Anthracite grey

## CERTIFICATIONS

- > UNI/EN 16139:2013 - Par.4 Sicurezza. 4.3 Stabilità (19/09/16)
- > UNI/EN 16139:2013 - Par.4.1. Generale. 4.2 Cesoiamento e schiacciamento (19/09/16)
- > UNI/EN 16139:2013 - Par.6. Prova 1. Carico statico sedile e schienale: 2-Uso estremo (19/09/16)
- > UNI/EN 16139:2013 - Par.6. Prova 12. Prova di carico statico delle gambe anteriori: 2-Uso estremo (10/10/16)
- > UNI/EN 16139:2013 - Par.6. Prova 13. Prova di carico statico delle gambe laterali: 2-Uso estremo (10/10/16)
- > UNI/EN 16139:2013 - Par.6. Prova 14. Prova di urto sul sedile: 2-Uso estremo (10/10/16)
- > UNI/EN 16139:2013 - Par.6. Prova 15. Prova di urto sullo schienale: 2-Uso estremo (10/10/16)
- > UNI/EN 16139:2013 - Par.6. Prova 2. Carico statico sul fronte anteriore: 2-Uso estremo (19/09/16)
- > UNI/EN 16139:2013 - Par.6. Prova 3. Carico verticale sullo schienale: 2-Uso estremo (19/09/16)
- > UNI/EN 16139:2013 - Par.6. Prova 8. Prova di fatica sedile e schienale: 2-Uso estremo (05/10/16)
- > UNI/EN 16139:2013 - Par.6. Prova 9. Prova di fatica del bordo anteriore: 2-Uso estremo (10/10/16)

## USES

coffee & restaurants, hotels, retail,