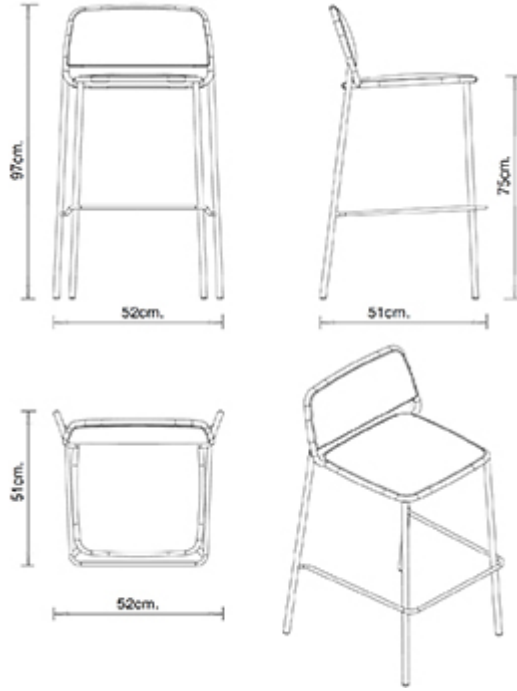


Ring 672

RING COLLECTION:
Ring 670, Ring 671, Ring 672,



Barstool with steel frame, 4 legs. Upholstered seat and back.

STACKABLE

4

WEIGHT

7,4 Kg

PACK

0,40 m³

PIECES PER BOX

2

FINISHES SEATING

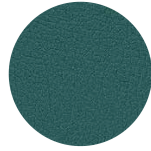
TE FABRICS



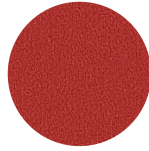
Melva
+ 5 colors



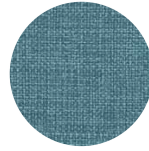
Fortis + 8 colori



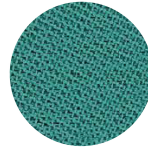
Inca
+ 14 colors



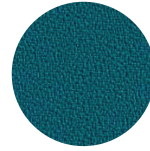
Amsterdam
+ 8 colors



Medley Gabriel
+ 15 colors



Chili Gabriel
+ 8 colors



Mirage
+ 8 colors



Convert
+ 7 colors



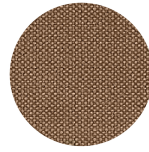
Fenice
+ 8 colors



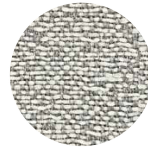
Mood Gabriel
+ 8 colors



Valencia
+ 14 colors



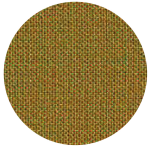
Reviva Hero
+ 10 colors



Fabthirty Rubelli
+ 8 colors



Ocean Mastrotto
+ 15 colors



Remix 3 Kvadrat
+ 15 colors

NOTE

Resources

[3ds](#)



| [dwg](#)



FRAMES

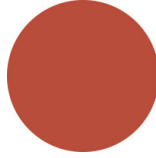
AC STEEL



NCS S4000-N VR White aluminium
☀



NCS S9000-N VR Jet black
☀



NCS S3060-Y80R Coral red
☀



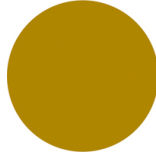
CR Chrome



NCS S9000-N VR Matt Jet Black
☀



VR Rough metallic bronze
☀



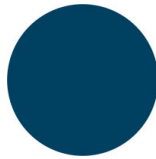
NCS S3060-Y Curry
☀



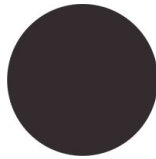
NCS S7020-G50Y Olive green
☀



NCS S4050-B40G Water blue
☀



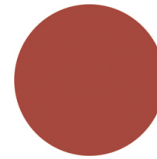
NCS S6030-B Capri blue
☀



NCS S8005-Y20R Brown
☀



NCS s0502-b VR Traffic white
☀



NCS S4040-R Marsala
☀



VR Pewter
☀



NCS S0500-N VR Pure white
☀



NCS S7502-B VR Anthracite grey
☀

CERTIFICATIONS

- > UNI/EN 16139:2013 - Par.4 Sicurezza. 4.3 Stabilità (03/10/16)
- > UNI/EN 16139:2013 - Par.4.1. Generale. 4.2 Cesoiamento e schiacciamento (03/10/16)
- > UNI/EN 16139:2013 - Par.6. Prova 1. Carico statico sedile e schienale: 2-Uso estremo (03/10/16)
- > UNI/EN 16139:2013 - Par.6. Prova 11. Prova di durabilità dell'appoggiapiedi: 2-Uso estremo (04/11/16)
- > UNI/EN 16139:2013 - Par.6. Prova 12. Prova di carico statico delle gambe anteriori: 2-Uso estremo (04/11/16)
- > UNI/EN 16139:2013 - Par.6. Prova 13. Prova di carico statico delle gambe laterali: 2-Uso estremo (04/11/16)
- > UNI/EN 16139:2013 - Par.6. Prova 14. Prova di urto sul sedile: 2-Uso estremo (04/11/16)
- > UNI/EN 16139:2013 - Par.6. Prova 15. Prova di urto sullo schienale: 2-Uso estremo (04/11/16)
- > UNI/EN 16139:2013 - Par.6. Prova 2. Carico statico sul fronte anteriore: 2-Uso estremo (03/10/16)
- > UNI/EN 16139:2013 - Par.6. Prova 3. Carico verticale sullo schienale: 2-Uso estremo (03/10/16)
- > UNI/EN 16139:2013 - Par.6. Prova 4. Carico statico sul poggiapiedi/ poggia gambe: 2-Uso estremo (03/10/16)
- > UNI/EN 16139:2013 - Par.6. Prova 8. Prova di fatica sedile e schienale: 2-Uso estremo (24/10/16)
- > UNI/EN 16139:2013 - Par.6. Prova 9. Prova di fatica del bordo anteriore: 2-Uso estremo (31/10/16)

USES

coffee & restaurants, hotels, retail,