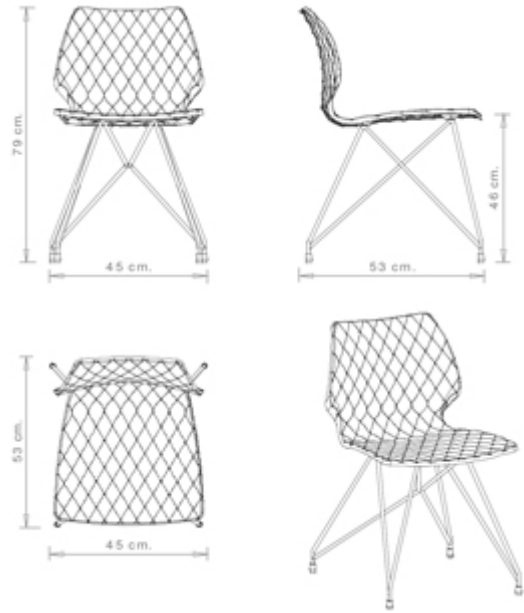


Uni 553

UNI COLLECTION:

Uni 550, Uni 378, Uni 550M, Uni 378B, Uni 378M, Uni 378B-M, Uni 380, Uni 380M, Uni 380B, Uni 380B-M, Uni 562, Uni 562M, Uni386, Uni 386M, Uni 602, Uni 602M, Uni 551, Uni 551M, Uni 552, Uni552M, Uni552-G, Uni 552M-G, Uni 552T, Uni 552G-T, Uni 558-DP, Uni 558M-DP, Uni 558-DR, Uni 553, Uni 558M-DR, Uni 553M, Uni 577, Uni 577M, Trolley 536, Uni 544, Uni 391, Uni 565, Uni 391M, Uni 393, Uni 393M, Uni 220, Uni 221, Uni 223, Uni 222,



Chair with wire steel frame. Polypropylene shell.

WEIGHT

5 kg

PACK

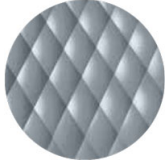
0,30 m³

PIECES PER BOX

2

FINISHES SEATING

PP POLYPROPYLENE



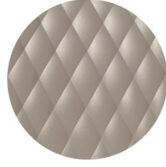
NCS S4005-B20G
Squirrel grey
≡



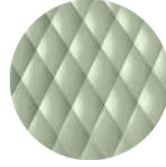
NCS S4020-B10G Dusty
blue
≡



NCS S6502-R Clay
≡



NCS S4005-Y50R
Turtle-dove
≡



NCS S3010-G50Y
Pistachio
≡



NCS S7502-B
Anthracite grey
≡



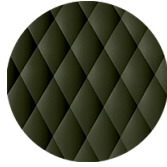
RAL 9005 Jet black
≡



NCS S3060-Y80R
Coral red
≡



NCS S0502-B
Traffic white
≡



NCS S7020-G50Y
Olive green
☀

NOTE

Resources

3ds  | dwg 

Shell in **olive green** is made of **100% recycled polypropylene** from industrial waste.

FRAMES

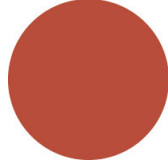
AC STEEL



NCS S4000-N VR White aluminium
☀



NCS S9000-N VR Jet black
☀



NCS S3060-Y80R Coral red
☀



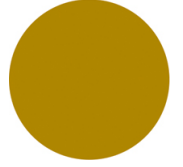
CR Chrome



NCS S9000-N VR Matt Jet Black
☀



VR Rough metallic bronze
☀



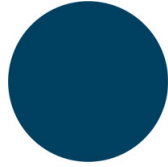
NCS S3060-Y Curry
☀



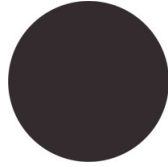
NCS S7020-G50Y Olive green
☀



NCS S4050-B40G Water blue
☀



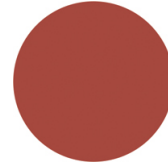
NCS S6030-B Capri blue
☀



NCS S8005-Y20R Brown
☀



NCS s0502-b VR Traffic white
☀



NCS S4040-R Marsala
☀



VR Pewter
☀



NCS S0500-N VR Pure white
☀



NCS S7502-B VR Anthracite grey
☀

USES

coffee & restaurants, hotels, educational, travel, office and waiting areas, retail,