

Uni-Ka 595

UNI-KA COLLECTION:

Uni-ka 594, Uni-Ka 594M, Uni-Ka 595, Uni-Ka 595M, Uni-Ka 596, Uni-Ka 596M, Uni-Ka 597-DP, Uni-Ka 597-DR, Uni-Ka 597M-DP, Uni-Ka 597M-DR, Uni-Ka 598, Uni-Ka 598M, Uni-Ka 599, Uni-Ka 599M, Uni-Ka 600, Uni-Ka 601, Uni-Ka 600M, Uni-Ka 601M, Uni-Ka 604M, Uni-Ka 604, Uni-ka 591 4P, Uni-ka 591M-4P, Uni-ka 591-5R, Uni-ka 591M-5R,



Armchair with sled steel frame and polypropylene shell.

WEIGHT

7,6 kg

PACK

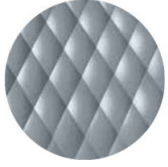
0,34 m³

PIECES PER BOX

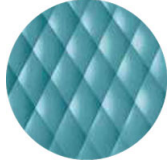
1

FINISHES SEATING

PP POLYPROPYLENE



NCS S4005-B20G
Squirrel grey
≡



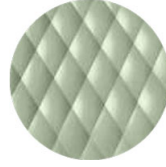
NCS S4020-B10G Dusty
blue
≡



NCS S6502-R Clay
≡



NCS S4005-Y50R
Turtle-dove
≡



NCS S3010-G50Y
Pistachio
≡



NCS S7502-B
Anthracite grey
≡



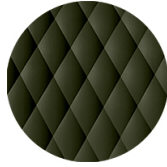
RAL 9005 Jet black
≡



NCS S3060-Y80R
Coral red
≡



NCS S0502-B
Traffic white
≡



NCS S7020-G50Y
Olive green
☀

NOTE

Resources

3ds



dwg



Shell in **olive green** is made of **100% recycled polypropylene** from industrial waste.

FRAMES

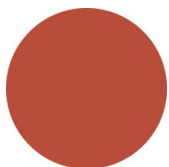
AC STEEL



NCS S4000-N VR White aluminium



NCS S9000-N VR Jet black



NCS S3060-Y80R Coral red



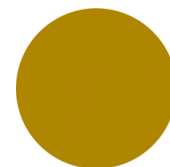
CR Chrome



NCS S9000-N VR Matt Jet Black



VR Rough metallic bronze



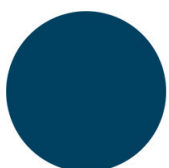
NCS S3060-Y Curry



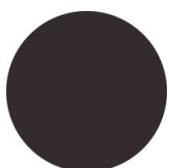
NCS S7020-G50Y Olive green



NCS S4050-B40G Water blue



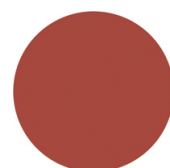
NCS S6030-B Capri blue



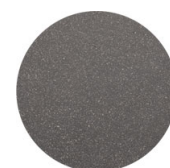
NCS S8005-Y20R Brown



NCS s0502-b VR Traffic white



NCS S4040-R Marsala



VR Pewter



NCS S0500-N VR Pure white



NCS S7502-B VR Anthracite grey



CERTIFICATIONS

> UNI/EN 16139:2013 - Par.6. Prova 8. Prova di fatica sedile e schienale: 2-Usò estremo (20/06/16)

USES

coffee & restaurants, hotels, educational, entertainment, travel, office and waiting areas, retail, health care,