



908



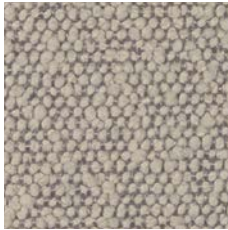
907



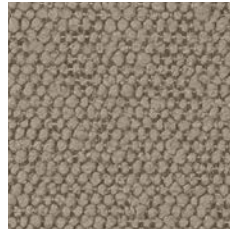
402



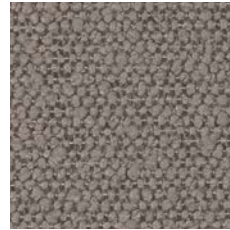
400



901



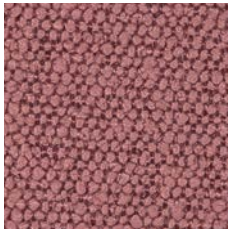
904



803



903



705



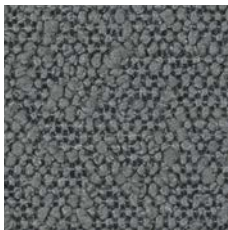
201



304



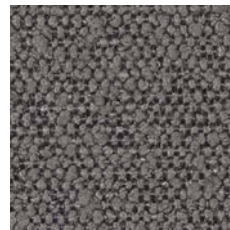
102



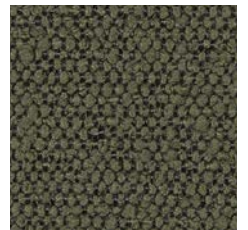
801



604



101



502



402

<b>Composizione</b>	Poliestere 100% FR
<b>Peso</b>	1428 gr/m <sup>2</sup> ± 8%
<b>Altezza</b>	140 cm ± 3%
<b>Resistenza all'abrasione Martindale ISO 12947-2 ASTM D4157</b>	≥ 80.000 cicli ≥ 80.000 cicli
<b>Solidità alla luce xeno - ISO 105 B02 AATCC 16.3</b>	≥ 4-5 ≥ 3-4
<b>Certificati di resistenza al fuoco</b>	UNI 9175 Classe 1IM EN 1021-1+2:2013 BS 5852 IS CRIB 5 BS 5852 IS 1 California TB 117:2013 FTP Code 307(88):10 Annex 1 Part. 8 NFPA 260
<b>Manutenzione</b>	
<b>Indicato per uso contract</b>	Grado di resistenza all'uso: elevato ●●○○
<b>Attenzione</b>	I tessuti indoor direttamente esposti alla luce del sole a ridosso di vetrate sono soggetti a deterioramento

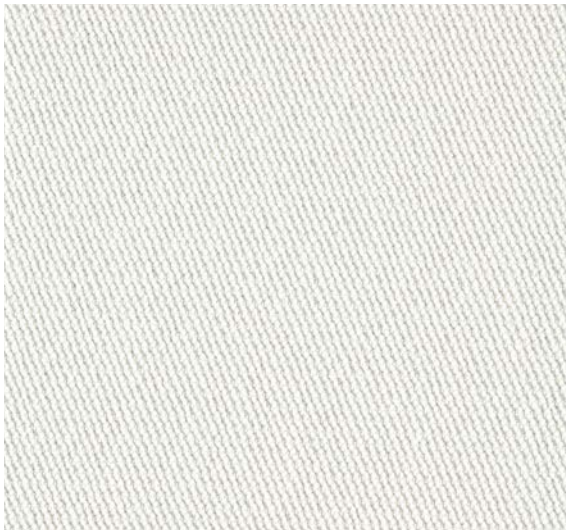
<b>Composition</b>	Polyester 100% FR
<b>Weight</b>	1428 gr/m <sup>2</sup> ± 8%
<b>Width</b>	140 cm ± 3%
<b>Abrasion test Martindale ISO 12947-2 ASTM D4157</b>	≥ 80.000 cycles ≥ 80.000 cycles
<b>Lightfastness xeno - ISO 105 B02 AATCC 16.3</b>	≥ 4-5 ≥ 3-4
<b>Fiammability certificates</b>	UNI 9175 Class 1IM EN 1021-1+2:2013 BS 5852 IS CRIB 5 BS 5852 IS 1 California TB 117:2013 FTP Code 307(88):10 Annex 1 Part. 8 NFPA 260
<b>Maintenance</b>	
<b>Fabric for commercial and Horeca use</b>	Wear and tear resistance: high ●●○○
<b>Warning</b>	Indoor fabrics that are exposed to direct sunlight close to windows are subject to deterioration

# B-CHEW BIT

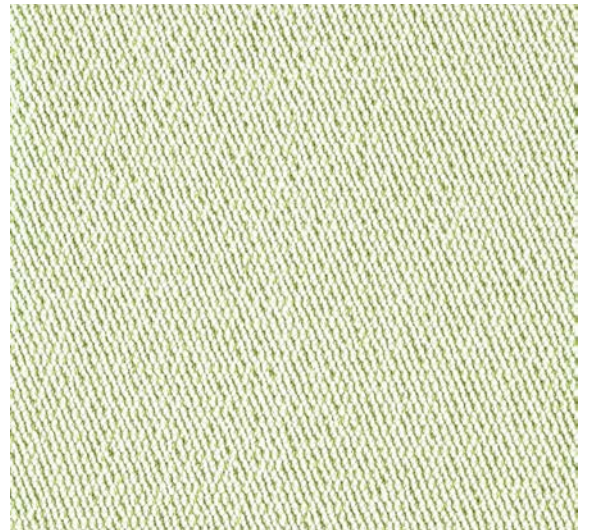


CAT. TOP

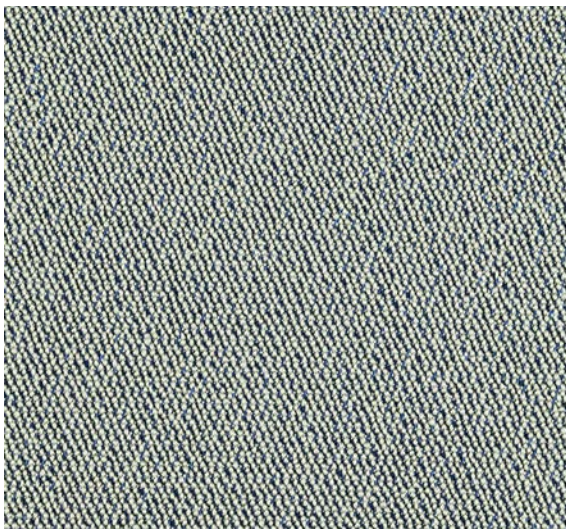
Jaquard bielastico / Bi-elastic jaquard



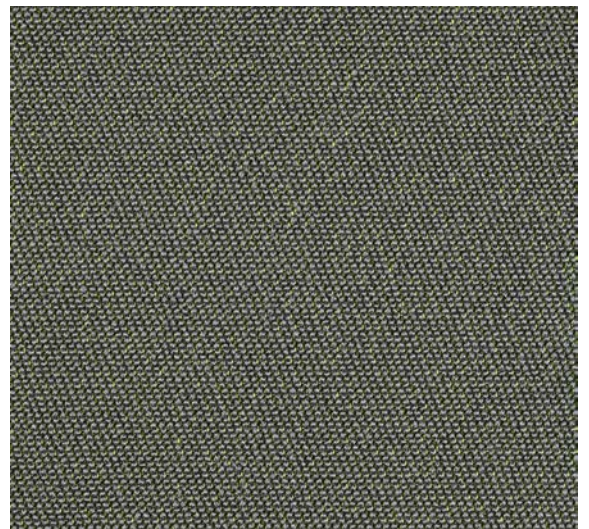
105



108



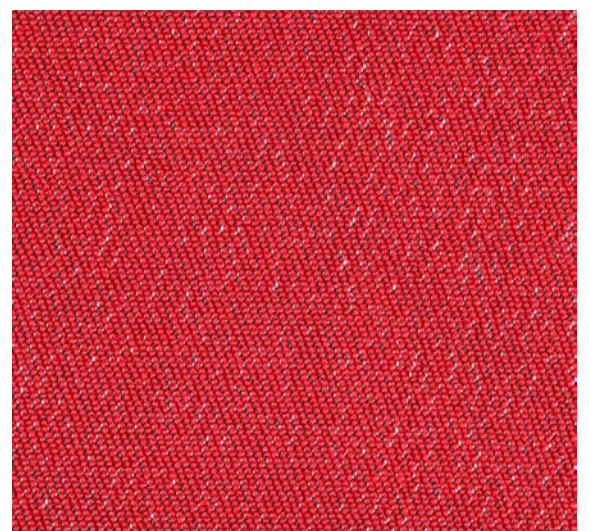
807



608

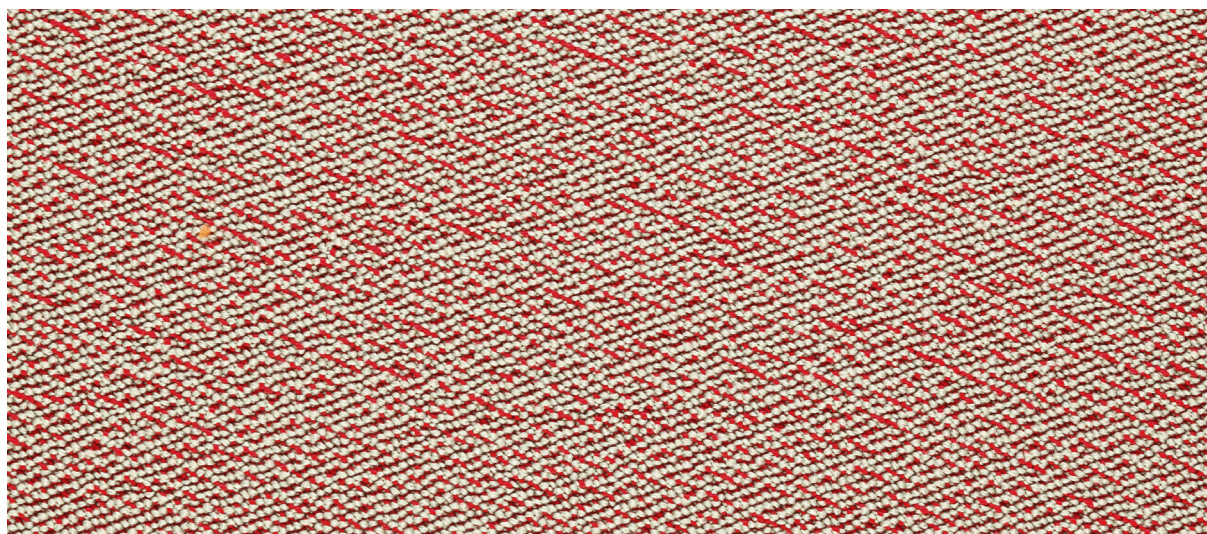


705



306

Altri colori disponibili su richiesta / More colors available upon request



803

<b>Composizione</b>	Poliestere riciclato 98% Elastomero LYCRA® 2%
<b>Peso</b>	1050 gr/m <sup>2</sup>
<b>Altezza</b>	140 cm
<b>Resistenza all'abrasione Martindale ISO 12947-2</b>	> 350.000 cicli
<b>Solidità alla luce xeno - ISO 105 B02</b>	6/7 -7
<b>Certificati di resistenza al fuoco</b>	UNI 9175 Classe 1IM EN 1021-1+2:2013 EN 13501-1 <sup>12</sup> : B-s1, d0 NF-P 92 507 Classe M3 BS 5852 IS CRIB 5 BS 7176:2007 Medium Hazard California TB 117:2013 IMO 3.20 FTP Code 307(88):10 Annex 1 Part. 8 NFPA 260
<b>Manutenzione</b>	
<b>Particolarità</b>	Riciclato. Outdoor, asciuga rapidamente. Bielastico, adatto per rivestire forme stondate
<b>Indicato per uso contract</b>	Grado di resistenza all'uso: superintenso ●●●●
<b>Attenzione</b>	I tessuti indoor direttamente esposti alla luce del sole a ridosso di vetrate sono soggetti a deterioramento

<b>Composition</b>	Recycled polyester 98% LYCRA® elastomer 2%
<b>Weight</b>	1050 gr/m <sup>2</sup>
<b>Width</b>	140 cm
<b>Abrasion test Martindale ISO 12947-2</b>	> 350.000 cycles
<b>Lightfastness xeno - ISO 105 B02</b>	6/7 - 7
<b>Fiammability certificates</b>	UNI 9175 Class 1IM EN 1021-1+2:2013 EN 13501-1 <sup>12</sup> : B-s1, d0 NF-P 92 507 Class M3 BS 5852 IS CRIB 5 BS 7176:2007 Medium Hazard California TB 117:2013 IMO 3.20 FTP Code 307(88):10 Annex 1 Part. 8 NFPA 260
<b>Maintenance</b>	
<b>Particularity</b>	Recycled fabric. Outdoor use, quick-drying. Bi-elastic, suitable for rounded shapes
<b>Fabric for commercial and Horeca use</b>	Wear and tear resistance: superextreme ●●●●
<b>Warning</b>	Indoor fabrics that are exposed to direct sunlight close to windows are subject to deterioration

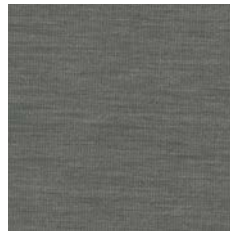




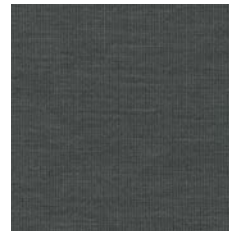
Tessuto imbottito in maglia / Padded knitted fabric



0123



0133



0163



0193



0913



0933



0453



0983



0103



0333



0353



0363



0623



0583



0663



0683

Altri colori disponibili su richiesta / More colors available upon request



0333

<b>Composizione</b>	Lana 68% Poliammide 22% Poliestere 10%
---------------------	--

<b>Composition</b>	Wool 68% Polyamide 22% Polyester 10%
--------------------	--

<b>Peso</b>	527 gr/m <sup>2</sup>
-------------	-----------------------

<b>Weight</b>	527 gr/m <sup>2</sup>
---------------	-----------------------

<b>Altezza</b>	165 cm
----------------	--------

<b>Width</b>	165 cm
--------------	--------

<b>Resistenza all'abrasione Martindale ISO 12947-2</b>	90.000 cicli
--	--------------

<b>Abrasion test Martindale ISO 12947-2</b>	90.000 cycles
---	---------------

<b>Solidità alla luce xeno - ISO 105 B02</b>	5-7
--	-----

<b>Lightfastness xeno - ISO 105 B02</b>	5-7
---	-----

<b>Certificati di resistenza al fuoco</b>	UNI 9175 Classe 1IM EN 1021-1+2:2014 DIN 4102 Classe B2 BS 5852 IS 1 BS 5852 IS CRIB 5 California TB 117:2013 FTP Code 307(88):10 Annex 1 Part. 8 NFPA 260 AS/NZS 3837 Classe 2 ASTM E84 Classe A
---	--

<b>Fiammability certificates</b>	UNI 9175 Class 1IM EN 1021-1+2:2014 DIN 4102 Class B2 BS 5852 IS 1 BS 5852 IS CRIB 5 California TB 117:2013 FTP Code 307(88):10 Annex 1 Part. 8 NFPA 260 AS/NZS 3837 Class 2 ASTM E84 Class A
--------------------------------------	--

<b>Certificato di assorbimento acustico</b>	UNI EN ISO 354:2003
---	---------------------

<b>Acoustic test sound absorption</b>	UNI EN ISO 354:2003
---	---------------------

<b>Certificato di resistenza acustica al flusso d'aria</b>	EN 29053
--	----------

<b>Acoustic certificate air flow resistance</b>	EN 29053
---	----------

<b>Manutenzione</b>	<p>Usare con regolarità l'aspirapolvere. Rimuovere subito le macchie con acqua tiepida pulita o acqua gassata. Non stirare, usare solo vapore</p>
---------------------	---

<b>Maintenance</b>	<p>Use vacuum-cleaner regularly. Remove stain as soon as with clean warm water or sparkling water. No ironing, only steaming</p>
--------------------	--

<b>Particolarità</b>	Fonoassorbente. Bielastico, adatto per rivestire forme stondate. Reach conforme, privo di alogeni e formaldeide
----------------------	---

<b>Particularity</b>	Sound absorbing. Bi-elastic, suitable for rounded shapes. Reach complaint, Halogen and formaldehyde free
----------------------	--

<b>Indicato per uso contract</b>	Grado di resistenza all'uso: intenso ●●●○
----------------------------------	---

<b>Fabric for commercial and Horeca use</b>	Wear and tear resistance: extreme ●●●○
---	--

<b>Attenzione</b>	I tessuti indoor direttamente esposti alla luce del sole a ridosso di vetrate sono soggetti a deterioramento
-------------------	--

<b>Warning</b>	Indoor fabrics that are exposed to direct sunlight close to windows are subject to deterioration
----------------	--





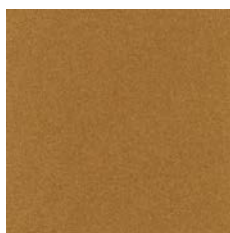
8048



8007



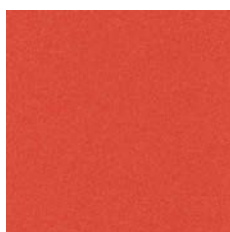
2031



3019



4051



4011



4059



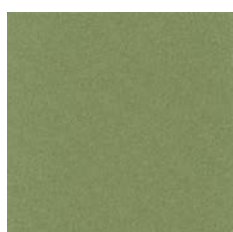
4022



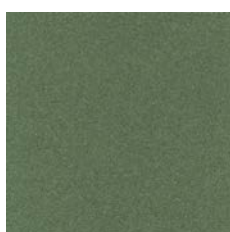
5015



6015



7043



7028

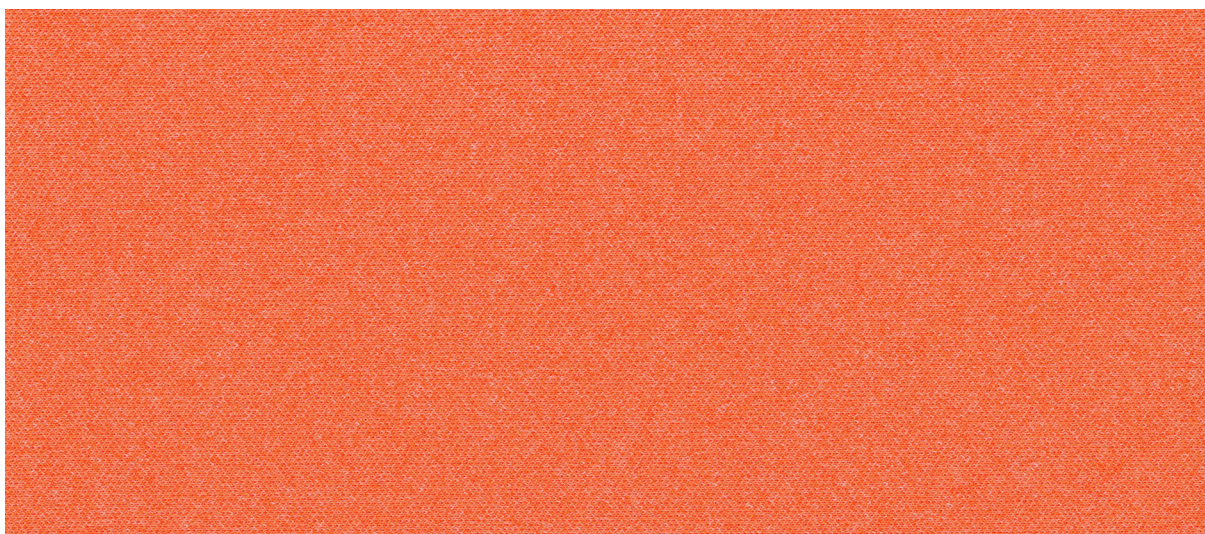


7026



7051

Altri colori disponibili su richiesta / More colors available upon request



4051

<b>Composizione</b>	Poliestere riciclato post-consumo 100% - certificato SEAQUAL®
<b>Peso</b>	410 gr/m <sup>2</sup> ± 5%
<b>Altezza</b>	140 cm ± 2%
<b>Resistenza all'abrasione Martindale ISO 12947-2</b>	100.000 cicli ± 10%
<b>Solidità alla luce xeno - ISO 105 B02</b>	6
<b>Certificati di resistenza al fuoco</b>	UNI 9175 Classe 11M EN 1021-1+2:2014 BS 7176:2007 Low Hazard California TB 117:2013
<b>Manutenzione</b>	
<b>Particolarità</b>	Tessuto con fibre SEAQUAL® prodotte con plastica riciclata post-consumo, recuperata nei mari e dai detriti galleggianti
<b>Indicato per uso contract</b>	Grado di resistenza all'uso: intenso ●●●○
<b>Attenzione</b>	I tessuti indoor direttamente esposti alla luce del sole a ridosso di vetrate sono soggetti a deterioramento

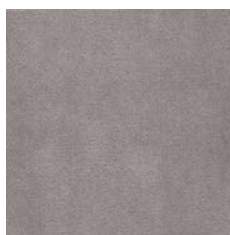
<b>Composition</b>	Post-consumer recycled Polyester 100% - SEAQUAL® certificate
<b>Weight</b>	410 gr/m <sup>2</sup> ± 5%
<b>Width</b>	140 cm ± 2%
<b>Abrasion test Martindale ISO 12947-2</b>	100.000 cycles ± 10%
<b>Lightfastness xeno - ISO 105 B02</b>	6
<b>Fammability certificates</b>	UNI 9175 Class 11M EN 1021-1+2:2014 BS 7176:2007 Low Hazard California TB 117:2013
<b>Maintenance</b>	
<b>Particularity</b>	Fabric of the SEAQUAL® fiber created entirely from post-consumer recycled plastic-from debris floating discarded
<b>Fabric for a commercial and Horeca use</b>	Wear and tear resistance: extreme ●●●○
<b>Warning</b>	Indoor fabrics that are exposed to direct sunlight close to windows are subject to deterioration



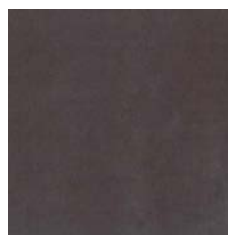




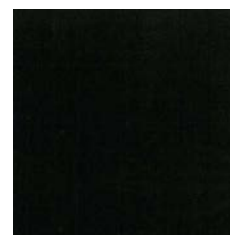
60 PERLA



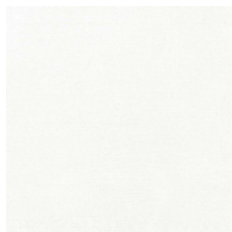
62 FUMO



63 TOPO



0 NERO



13 GIGLIO



12 LAVANDA



16 BLU COBALTO



18 NOTTE



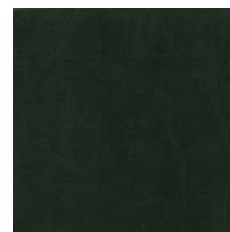
10 MINERALE



30 TIGLIO



35 ERBA



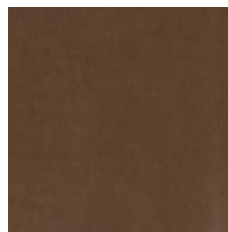
37 VERDE BOTTIGLIA



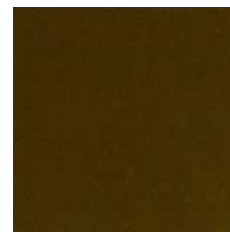
76 SABBIA



43 SENAPE



50 CAPPUCCINO



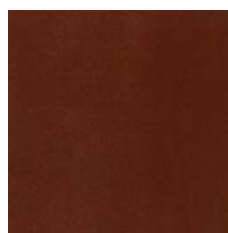
52 BRONZO



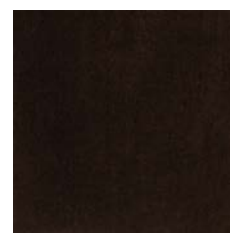
73 ECRU



20 DAINO CHIARO



25 TERRACOTTA



55 MOKA



92 ROSA ANTICO



95 PEONIA

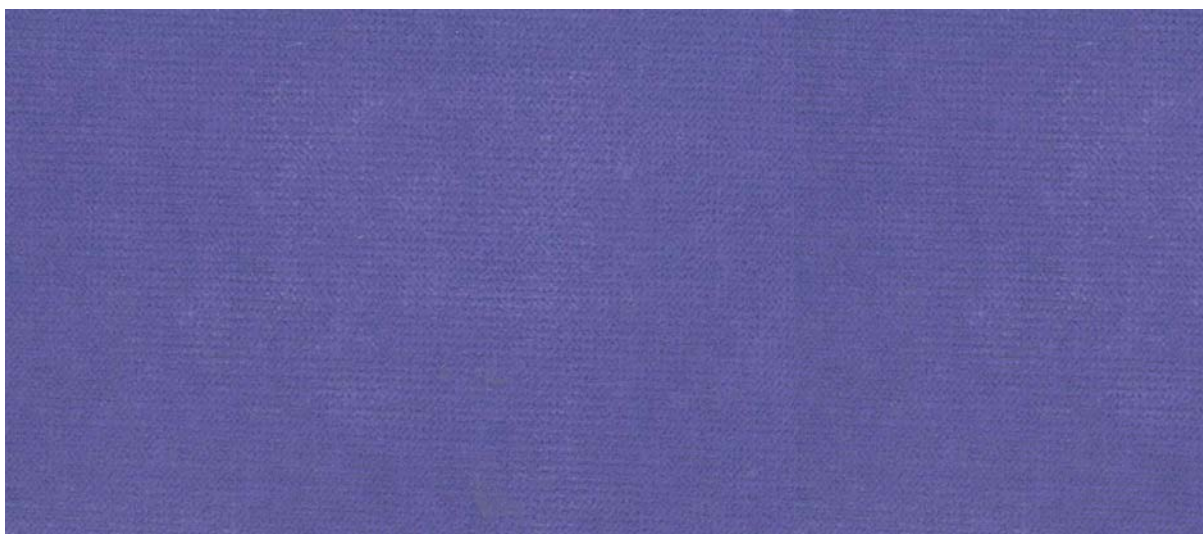


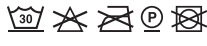
75 CILIEGIA




97 VIOLA PORPORA

Altri colori disponibili su richiesta / More colors available upon request


**12 LAVANDA**

<b>Composizione</b>	Poliestere FR 100%
<b>Peso</b>	378 gr/m <sup>2</sup>
<b>Altezza</b>	140 cm
<b>Resistenza all'abrasione Martindale ISO 12947-2</b>	50.000 cicli
<b>Solidità alla luce xeno - ISO 105 B02</b>	≥ 5
<b>Certificati di resistenza al fuoco</b>	UNI 9175 Classe 1IM EN 1021-1+2:2014 EN 13773 Classe 1 NF-P 503 Classe M1 DIN 4102 Classe B1 BS 5852 IS CRIB 5 California TB 117:2013 NFPA 701 FTP Code 307(88):10 Annex 1 Part.8
<b>Manutenzione</b>	
<b>Indicato per uso contract</b>	Grado di resistenza all'uso: elevato ●●○○
<b>Attenzione</b>	I tessuti indoor direttamente esposti alla luce del sole a ridosso di vetrate sono soggetti a deterioramento

<b>Composition</b>	Polyester FR 100%
<b>Weight</b>	378 gr/m <sup>2</sup>
<b>Width</b>	140 cm
<b>Abrasion test Martindale ISO 12947-2</b>	50.000 cycles
<b>Lightfastness xeno - ISO 105 B02</b>	≥ 5
<b>Fiammability certificates</b>	UNI 9175 Class 1IM EN 1021-1+2:2014 EN 13773 Class 1 NF-P 503 Class M1 DIN 4102 Class B1 BS 5852 IS CRIB 5 California TB 117:2013 NFPA 701 FTP Code 307(88):10 Annex 1 Part.8
<b>Maintenance</b>	
<b>Fabric for commercial and Horeca use</b>	Wear and tear resistance: high ●●○○
<b>Warning</b>	Indoor fabrics that are exposed to direct sunlight close to windows are subject to deterioration



# AMARA 83974 NON FEU M1

CAT. ELEGANT

Ciniglia / Chenille



13 NEIGE



600 ARGENT



65 FONTE



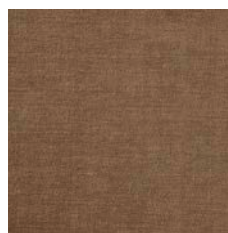
64 ANTHRACITE



720 IVOIRE



74 BEIGE



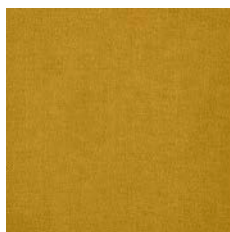
510 PRALINÉ



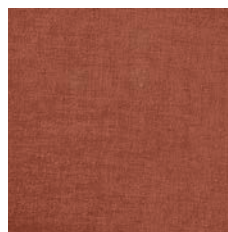
7776 TOURBE



4041 PAILLE



420 SAFRAN



451 BRUGNON



260 TERRE CUITE



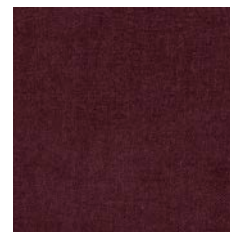
9093 PIVOINE



70 RUBIS



750 GROISELLE



8085 FIGUE



3030 THÉ VERT



140 PÉTROLE



160 INDIGO



97 PENSÉE



320 AMANDE



3036 KAKI



330 VERT D'AEAU



3038 MALACHITE

Altri colori disponibili su richiesta / More colors available upon request



88 LILAS

<b>Composizione</b>	Poliestere FR 100%
<b>Peso</b>	484 gr/m <sup>2</sup>
<b>Altezza</b>	140 cm
<b>Resistenza all'abrasione Martindale ISO 12947-2</b>	55.000 cicli
<b>Solidità alla luce xeno - ISO 105 B02</b>	7
<b>Certificati di resistenza al fuoco</b>	UNI 9175 Classe 1IM NF-P 503 Classe M1 BS 5852 IS 0+1 NFPA 701 FTP Code 307(88):10 Annex 1 Part.8
<b>Manutenzione</b>	<p>1 Rimuovere l'eccesso di prodotto caduto sul divano; 2 Applicare l'acqua sulla macchia, direttamente o su carta inumidita o un panno assorbente; 3 Premere sulla macchia e sfregare delicatamente il tessuto con movimenti circolari; Ripetere se necessario</p>
<b>Particolarità</b>	Realizzato con fibre AquaClean®: smacchiabile con acqua
<b>Indicato per uso contract</b>	Grado di resistenza all'uso: elevato ●●○○ Consigliato per arredi Horeca particolarmente esposti a macchie
<b>Attenzione</b>	I tessuti indoor direttamente esposti alla luce del sole a ridosso di vetrate sono soggetti a deterioramento

<b>Composition</b>	Polyester FR 100%
<b>Weight</b>	484 gr/m <sup>2</sup>
<b>Width</b>	140 cm
<b>Abrasion test Martindale ISO 12947-2</b>	55.000 cycles
<b>Lightfastness xeno - ISO 105 B02</b>	7
<b>Fiammability certificates</b>	UNI 9175 Classe 1IM NF-P 503 Classe M1 BS 5852 IS 0+1 NFPA 701 FTP Code 307(88):10 Annex 1 Part.8
<b>Maintenance</b>	<p>1 Blot the fabric to remove any excess substance; 2 Apply water on the stain, directly or on moistened paper or an absorbent cloth; 3 Press on the stain and rub the fabric gently with circular movements. Repeat if necessary</p>
<b>Particularity</b>	AquaClean® technology: easy to clean with water
<b>Fabric for commercial and Horeca use</b>	Wear and tear resistance: high ●●○○ Recommended for hospitality furniture particularly at risk of stains
<b>Warning</b>	Indoor fabrics that are exposed to direct sunlight close to windows are subject to deterioration





Lana / Wool



61107



63016



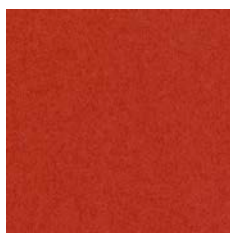
67066



62061



61003



63004



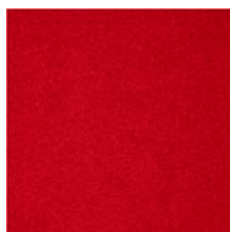
66119



68072



61004



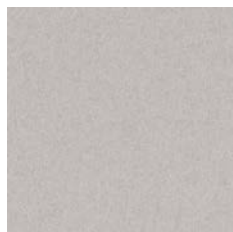
64149



65072



68003



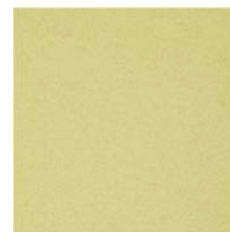
60003



63070



66117



68127



66056



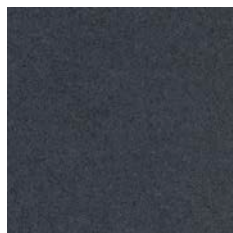
64009



65070



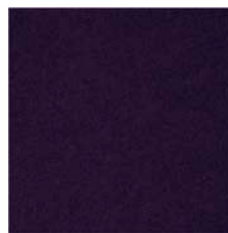
68128



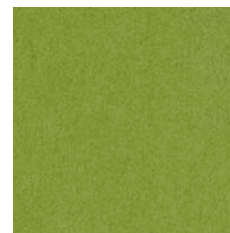
60017



64045

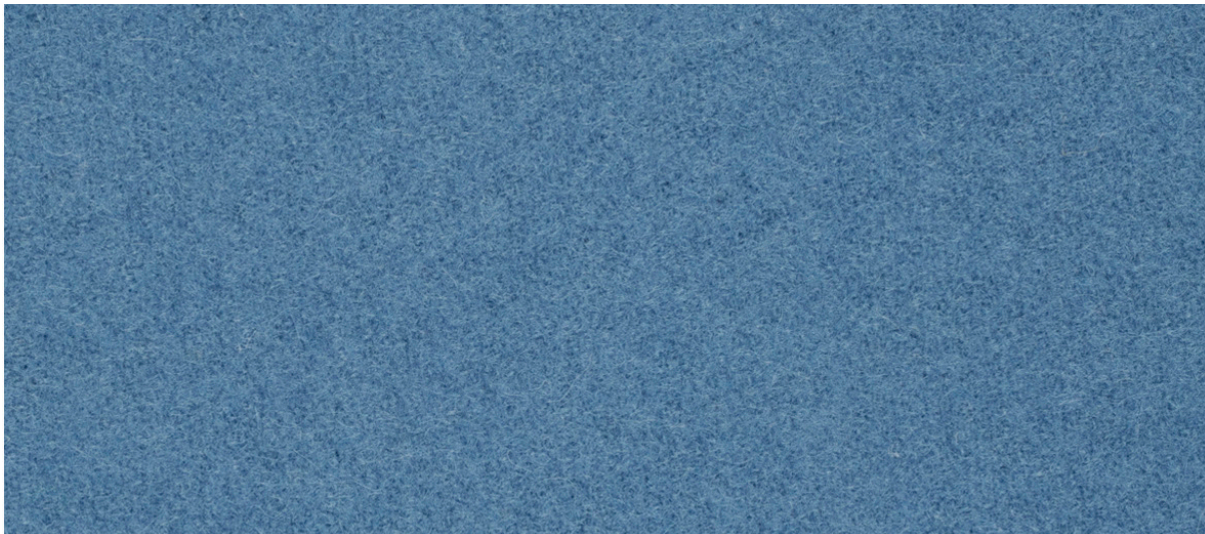


65071




68035

Altri colori disponibili su richiesta / More colors available upon request



66119

<b>Composizione</b>	Lana della Nuova Zelanda 100%
<b>Peso</b>	571 gr/m <sup>2</sup>
<b>Altezza</b>	140 cm
<b>Resistenza all'abrasione Martindale ISO 12947-2</b>	50.000 cicli
<b>Solidità alla luce xeno - ISO 105 B02</b>	5-7
<b>Certificati di resistenza al fuoco</b>	UNI 9175 Classe 1IM EN 1021-1+2:2014 DIN 4102 Classe B2 BS 5852 IS 0+1 BS 5852 IS CRIB 5 BS 476 Part. 7 Classe 1 California TB 117:2013 NFPA 286 B2-Q1 Önorm FTP Code 307(88):10 Annex 1 Part. 8 IMO RES.A. 652 (16) MED certificate IMO ASTM E 84
<b>Certificato di assorbimento acustico</b>	UNI EN ISO 354:2003 UNI EN ISO 11654
<b>Certificato di resistenza acustica al flusso d'aria</b>	EN 29053 ISO 9053-1:2020
<b>Manutenzione</b>	 Non spazzolare. Usare con regolarità l'aspirapolvere a beccuccio liscio
<b>Particolarità</b>	Fonoassorbente. Materiale naturale che per le sue caratteristiche tecniche può formare pilling asportabile utilizzando una comune macchinetta mangiapelucchi
<b>Indicato per uso contract</b>	Grado di resistenza all'uso: elevato ●●○○
<b>Attenzione</b>	I tessuti indoor direttamente esposti alla luce del sole a ridosso di vetrate sono soggetti a deterioramento

<b>Composition</b>	New Zealand wool 100%
<b>Weight</b>	571 gr/m <sup>2</sup>
<b>Width</b>	140 cm
<b>Abrasion test Martindale ISO 12947-2</b>	50.000 cycles
<b>Lightfastness xeno - ISO 105 B02</b>	5-7
<b>Fiammability certificates</b>	UNI 9175 Class 1IM EN 1021-1+2:2014 DIN 4102 Class B2 BS 5852 IS 0+1 BS 5852 IS CRIB 5 BS 476 Part. 7 Class 1 California TB 117:2013 NFPA 286 B2-Q1 Önorm FTP Code 307(88):10 Annex 1 Part. 8 IMO RES.A. 652 (16) MED certificate IMO ASTM E 84
<b>Acoustic test sound absorption</b>	UNI EN ISO 354:2003 UNI EN ISO 11654
<b>Acoustic certificate air flow resistance</b>	EN 29053 ISO 9053-1:2020
<b>Maintenance</b>	 Do not brush. Use vacuum-cleaner with smooth spout regularly
<b>Particularity</b>	Sound absorbing. Natural material. For its technical features it could pill; in case use any fabric pilling shaver/remover
<b>Fabric for commercial and Horeca use</b>	Wear and tear resistance: high ●●○○
<b>Warning</b>	Indoor fabrics that are exposed to direct sunlight close to windows are subject to deterioration





0285



1685



0985



3485



0585



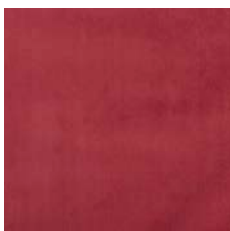
2785



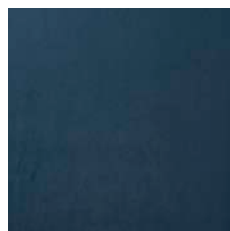
1085



2185



1485



4885

Altri colori disponibili su richiesta / More colors available upon request


**4585**

**Composizione** Poliestere 96%  
Acrilico FR 4%

**Peso** 350 gr/m<sup>2</sup>

**Altezza** 140 cm

**Resistenza all'abrasione  
Martindale ISO 12947-2** 60.000 cicli

**Solidità alla luce  
xeno - ISO 105 B02** 4

**Certificati di  
resistenza al fuoco** UNI 9175 Classe 1IM  
EN 1021-1+2:2014  
BS 5852 IS 0+1  
IMO FTP CODE 2010

**Manutenzione**

**Particolarità** Trattamento antibatterico, antivirale,  
water repellent e antistatico su richiesta

**Indicato per uso contract** Grado di resistenza all'uso:  
elevato ●●○○

**Attenzione** I tessuti indoor direttamente esposti alla  
luce del sole a ridosso di vetrate sono  
soggetti a deterioramento

**Composition** Polyester 96%  
Acrylic FR 4%

**Weight** 350 gr/m<sup>2</sup>

**Width** 140 cm

**Abrasion test  
Martindale ISO 12947-2** 60.000 cycles

**Lightfastness  
xeno - ISO 105 B02** 4

**Fiammability  
certificates** UNI 9175 Class 1IM  
EN 1021-1+2:2014  
BS 5852 IS 0+1  
IMO FTP CODE 2010

**Maintenance**

**Particularity** Antibacterial, antiviral, water repellent  
and antistatic on demand treatment

**Fabric for commercial  
and Horeca use** Wear and tear resistance:  
high ●●○○

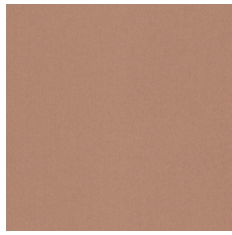
**Warning** Indoor fabrics that are exposed to direct  
sunlight close to windows are subject to  
deterioration


 Su richiesta/  
On demand

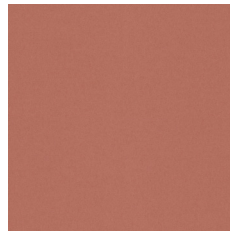





Lana / Wool



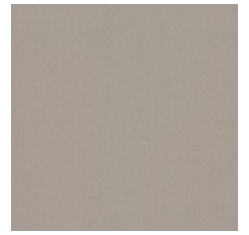
0312



0512



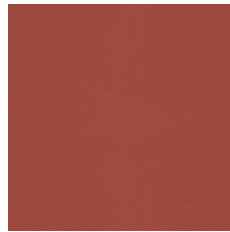
0732



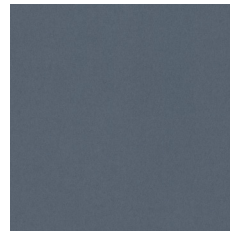
0212



0352



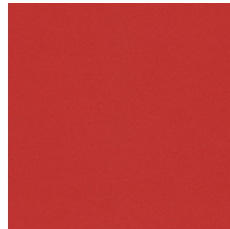
0542



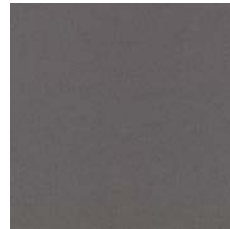
0152



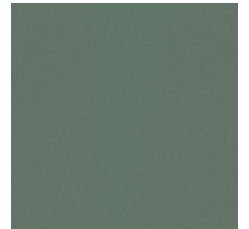
0242



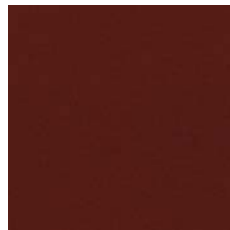
0552



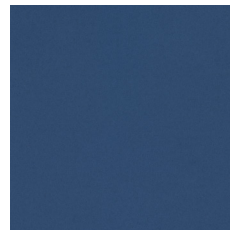
0162



0932



0582



0752



0962

Altri colori disponibili su richiesta / More colors available upon request



0932

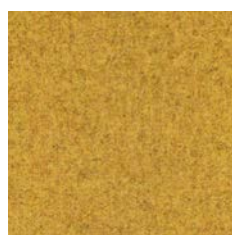
<b>Composizione</b>	Nuova lana 97% Nylon riciclato 3%
<b>Peso</b>	370 gr/m <sup>2</sup>
<b>Altezza</b>	140 cm
<b>Resistenza all'abrasione Martindale ISO 12947-2</b>	45.000 cicli
<b>Solidità alla luce xeno - ISO 105 B02</b>	5-6
<b>Certificati di resistenza al fuoco</b>	UNI 9175 Classe 11M EN 1021-1+2:2013 NF-D 60 013:2006 BS 5852 IS CRIB 5 BS 5852 IS 1 California TB 117:2013 FTP Code 307(88):10 Annex 1 Part.8 AS/NZS 3837 Classe 2 ASTM E84 Classe A SN 198 898 5.3
<b>Certificato di assorbimento acustico</b>	UNI EN ISO 354:2003
<b>Certificato di resistenza acustica al flusso d'aria</b>	EN 29053
<b>Manutenzione</b>	 Pulire frequentemente con l'aspirapolvere. Rimuovere subito le macchie con acqua pulita tiepida o acqua gassata e poco detergente
<b>Particolarità</b>	Fonoassorbente. Materiale naturale che per le sue caratteristiche tecniche può formare pilling asportabile utilizzando una comune macchinetta mangiapellucchi
<b>Indicato per uso contract</b>	Grado di resistenza all'uso: medio ●○○○
<b>Attenzione</b>	I tessuti indoor direttamente esposti alla luce del sole a ridosso di vetrate sono soggetti a deterioramento

<b>Composition</b>	New wool 97% Recycled nylon 3%
<b>Weight</b>	370 gr/m <sup>2</sup>
<b>Width</b>	140 cm
<b>Abrasion test Martindale ISO 12947-2</b>	45.000 cycles
<b>Lightfastness xeno - ISO 105 B02</b>	5-6
<b>Fiammability certificates</b>	UNI 9175 Class 11M EN 1021-1+2:2013 NF-D 60 013:2006 BS 5852 IS CRIB 5 BS 5852 IS 1 California TB 117:2013 FTP Code 307(88):10 Annex 1 Part.8 AS/NZS 3837 Class 2 ASTM E84 Class A SN 198 898 5.3
<b>Acoustic test sound absorption</b>	UNI EN ISO 354:2003
<b>Acoustic certificate air flow resistance</b>	EN 29053
<b>Maintenance</b>	 Vacuum clean frequently. Remove stains as soon as with clean warm water or sparkling water and a low quantity of cleaning liquid
<b>Particularity</b>	Sound absorbing. Natural material. For its technical features it could pill; in case use any fabric pilling shaver/remover
<b>Fabric for commercial and Horeca use</b>	Wear and tear resistance: medium ●○○○
<b>Warning</b>	Indoor fabrics that are exposed to direct sunlight close to windows are subject to deterioration





505



52



621



351



503



57



601



358



511



103



455



301



504



152



453



303



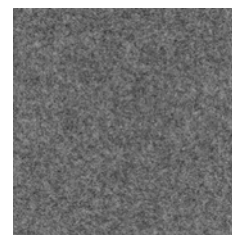
563



154



452



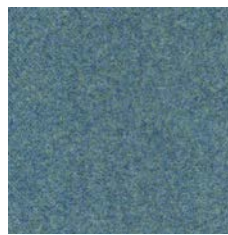
602



553



201



454



603

Altri colori disponibili su richiesta / More colors available upon request



453

<b>Composizione</b>	Lana 75% Poliammide 25%
<b>Peso</b>	335 gr/m <sup>2</sup> ± 7%
<b>Altezza</b>	150 cm ± 5%
<b>Resistenza all'abrasione Martindale ISO 12947-2</b>	100.000 cicli
<b>Solidità alla luce xeno - ISO 105 B02</b>	6 ± 1
<b>Certificati di resistenza al fuoco</b>	UNI 9175 Classe 11M EN 1021-1+2:2014 California TB 117:2013 BS 5852 IS CRIB 5 (con trattamento su richiesta)
<b>Certificato di assorbimento acustico</b>	UNI EN ISO 354:2003 UNI EN ISO 10534-2
<b>Certificato di resistenza acustica al flusso d'aria</b>	ISO 9053-2:2020
<b>Manutenzione</b>	 Non spazzolare. Usare con regolarità l'aspirapolvere a beccuccio liscio
<b>Particolarità</b>	Fonoassorbente. Materiale naturale che per le sue caratteristiche tecniche può formare pilling asportabile utilizzando una comune macchinetta mangiapelucchi
<b>Indicato per uso contract</b>	Grado di resistenza all'uso: intenso ●●●○
<b>Attenzione</b>	I tessuti indoor direttamente esposti alla luce del sole a ridosso di vetrate sono soggetti a deterioramento

<b>Composition</b>	Wool 75% Polyamide 25%
<b>Weight</b>	335 gr/m <sup>2</sup> ± 7%
<b>Width</b>	150 cm ± 5%
<b>Abrasion test Martindale ISO 12947-2</b>	100.000 cycles
<b>Lightfastness xeno - ISO 105 B02</b>	6 ± 1
<b>Fiammability certificates</b>	UNI 9175 Class 11M EN 1021-1+2:2014 California TB 117:2013 BS 5852 IS CRIB 5 (with on demand treatment)
<b>Acoustic test sound absorption</b>	UNI EN ISO 354:2003 UNI EN ISO 10534-2
<b>Acoustic certificate air flow resistance</b>	ISO 9053-2:2020
<b>Maintenance</b>	 Do not brush. Use vacuum-cleaner with smooth spout regularly
<b>Particularity</b>	Sound Absorbing. Natural material. For its technical features it could pill; in case use features any fabric pilling shaver/remover
<b>Fabric for commercial and Horeca use</b>	Wear and tear resistance: extreme ●●●○
<b>Warning</b>	Indoor fabrics that are exposed to direct sunlight close to windows are subject to deterioration





61107



63016



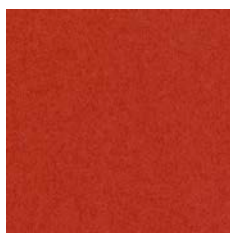
67066



62061



61003



63004



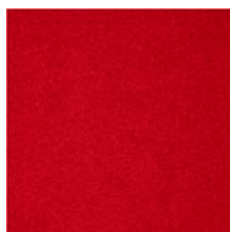
66119



68072



61004



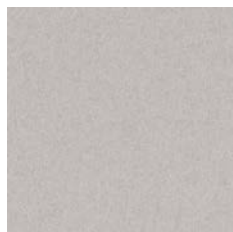
64149



65072



68003



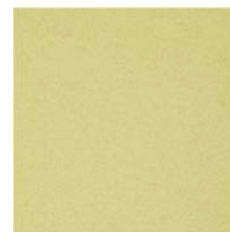
60003



63070



66117



68127



66056



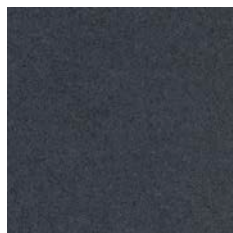
64009



65070



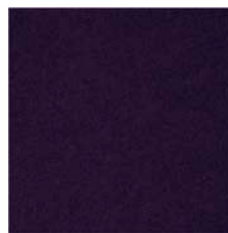
68128



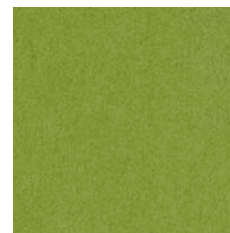
60017



64045

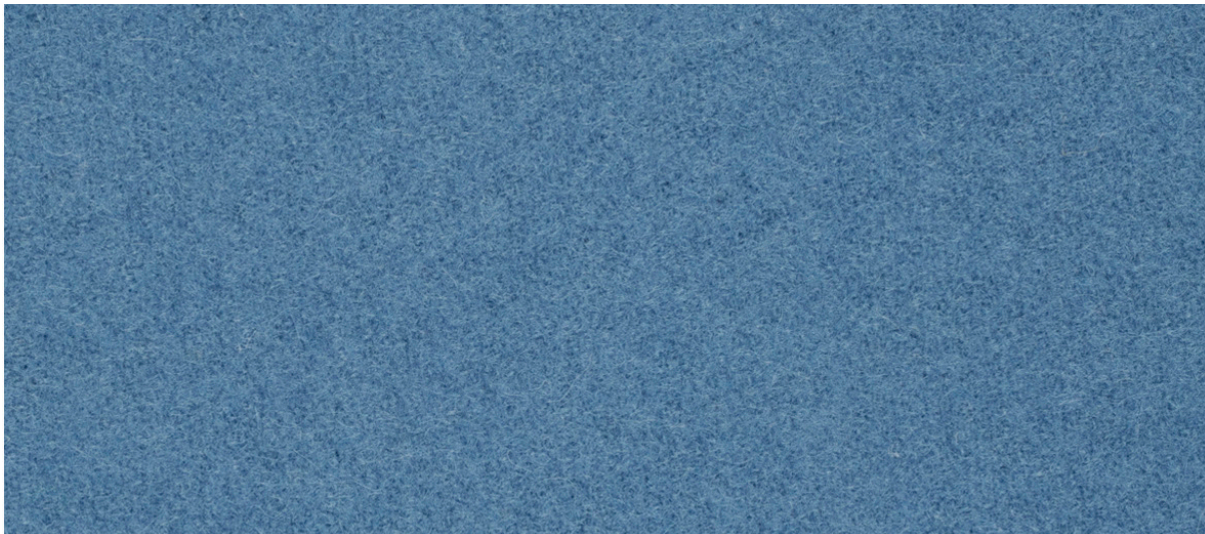


65071



68035

Altri colori disponibili su richiesta / More colors available upon request

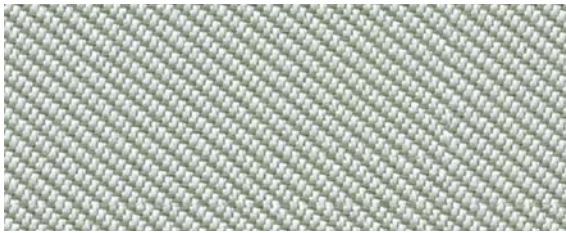


66119

<b>Composizione</b>	Lana della Nuova Zelanda 100%
<b>Peso</b>	571 gr/m <sup>2</sup>
<b>Altezza</b>	140 cm
<b>Resistenza all'abrasione Martindale ISO 12947-2</b>	50.000 cicli
<b>Solidità alla luce xeno - ISO 105 B02</b>	5-7
<b>Certificati di resistenza al fuoco</b>	UNI 9175 Classe 1IM EN 1021-1+2:2014 DIN 4102 Classe B2 BS 5852 IS 0+1 BS 5852 IS CRIB 5 BS 476 Part. 7 Classe 1 California TB 117:2013 NFPA 286 B2-Q1 Önorm FTP Code 307(88):10 Annex 1 Part. 8 IMO RES.A. 652 (16) MED certificate IMO ASTM E 84
<b>Certificato di assorbimento acustico</b>	UNI EN ISO 354:2003 UNI EN ISO 11654
<b>Certificato di resistenza acustica al flusso d'aria</b>	EN 29053 ISO 9053-1:2020
<b>Manutenzione</b>	 Non spazzolare. Usare con regolarità l'aspirapolvere a beccuccio liscio
<b>Particolarità</b>	Fonoassorbente. Materiale naturale che per le sue caratteristiche tecniche può formare pilling asportabile utilizzando una comune macchinetta mangiapelucchi
<b>Indicato per uso contract</b>	Grado di resistenza all'uso: elevato ●●○○
<b>Attenzione</b>	I tessuti indoor direttamente esposti alla luce del sole a ridosso di vetrate sono soggetti a deterioramento

<b>Composition</b>	New Zealand wool 100%
<b>Weight</b>	571 gr/m <sup>2</sup>
<b>Width</b>	140 cm
<b>Abrasion test Martindale ISO 12947-2</b>	50.000 cycles
<b>Lightfastness xeno - ISO 105 B02</b>	5-7
<b>Fiammability certificates</b>	UNI 9175 Class 1IM EN 1021-1+2:2014 DIN 4102 Class B2 BS 5852 IS 0+1 BS 5852 IS CRIB 5 BS 476 Part. 7 Class 1 California TB 117:2013 NFPA 286 B2-Q1 Önorm FTP Code 307(88):10 Annex 1 Part. 8 IMO RES.A. 652 (16) MED certificate IMO ASTM E 84
<b>Acoustic test sound absorption</b>	UNI EN ISO 354:2003 UNI EN ISO 11654
<b>Acoustic certificate air flow resistance</b>	EN 29053 ISO 9053-1:2020
<b>Maintenance</b>	 Do not brush. Use vacuum-cleaner with smooth spout regularly
<b>Particularity</b>	Sound absorbing. Natural material. For its technical features it could pill; in case use any fabric pilling shaver/remover
<b>Fabric for commercial and Horeca use</b>	Wear and tear resistance: high ●●○○
<b>Warning</b>	Indoor fabrics that are exposed to direct sunlight close to windows are subject to deterioration





PADDLE OOC13



RIPTIDE OOC14



GULF OOC15



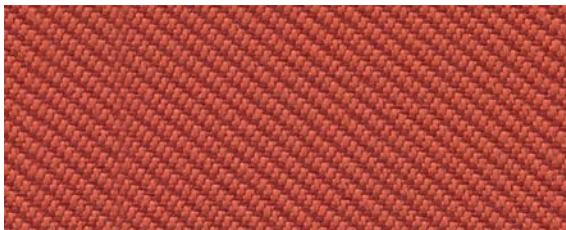
NEPTUNE OOC11



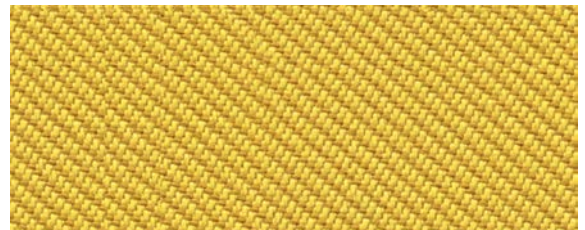
SEAFARER OOC16



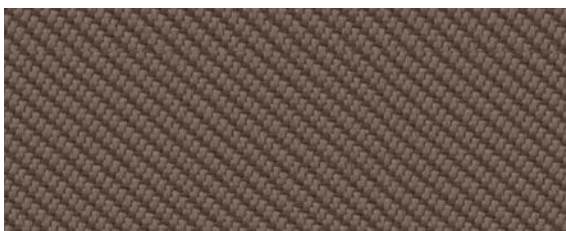
SEA OOC04



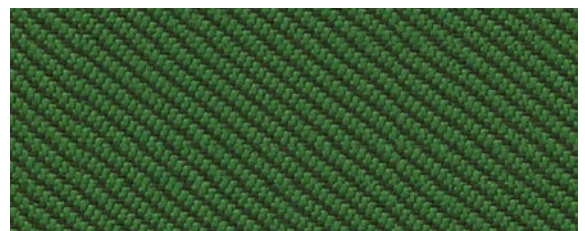
AQUATIC OOC12



BARRIER OOC07




SHORE OOC09




COAST OOC03



GULF OOC15

<b>Composizione</b>	Poliestere riciclato post-consumo 100% di cui il 50% certificato SEAQUAL®
<b>Peso</b>	497 gr/m <sup>2</sup> ± 5%
<b>Altezza</b>	140 cm minimo
<b>Resistenza all'abrasione Martindale ISO 12947-2</b>	≥ 100.000 cicli
<b>Solidità alla luce xeno - ISO 105 B02</b>	5 OOC16 4/5
<b>Certificati di resistenza al fuoco</b>	UNI 9175 Classe 11M EN 1021-1+2:2006 BS 7176:2007 Low Hazard
<b>Certificati su richiesta</b>	BS 5852 IS CRIB 5 BS 7176:2007 Medium Hazard
<b>Manutenzione</b>	 <p>Aspirare regolarmente. Pulire con un panno umido utilizzando uno shampoo/ sapone per tappezzeria brevettato. Per una pulizia più profonda utilizzare vapore, candeggina, alcool o lavaggio professionale a secco</p>
<b>Particolarità</b>	Tessuto con fibre prodotte con plastica riciclata post-consumo e fibre SEAQUAL® (50%)
<b>Indicato per uso contract</b>	Grado di resistenza all'uso: intenso ●●●○
<b>Attenzione</b>	I tessuti indoor direttamente esposti alla luce del sole a ridosso di vetrate sono soggetti a deterioramento

<b>Composition</b>	Post-consumer recycled polyester 100% including 50% SEAQUAL® certificate
<b>Weight</b>	497 gr/m <sup>2</sup> ± 5%
<b>Width</b>	140 cm minimum
<b>Abrasion test Martindale ISO 12947-2</b>	≥ 100.000 cycles
<b>Lightfastness xeno - ISO 105 B02</b>	5 OOC16 4/5
<b>Fiammability certificates</b>	UNI 9175 Class 11M EN 1021-1+2:2006 BS 7176:2007 Low Hazard BS 5852 IS CRIB 5 BS 7176:2007 Medium Hazard
<b>Maintenance</b>	 <p>Vacuum regularly. Wipe with a damp cloth using a proprietary upholstery shampoo/soap. For deeper cleaning use steam, bleach, alcohol or professionally dry clean</p>
<b>Particularity</b>	Fabric created enterly from post-consumer recycled plastic-from debris floating discarded and fiber SEAQUAL® (50%)
<b>Fabric for commercial and Horeca use</b>	Wear and tear resistance: extreme ●●●○
<b>Warning</b>	Indoor fabrics that are exposed to direct sunlight close to windows are subject to deterioration



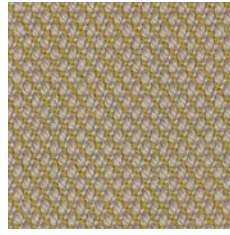




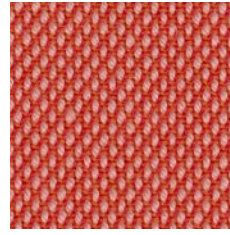
Jaquard



0213



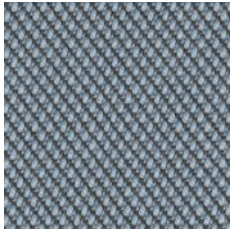
0236



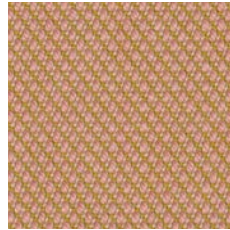
0526



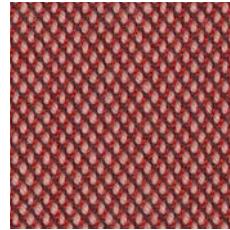
0253



0713



0506



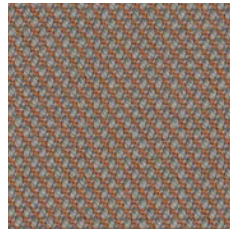
0636



0466



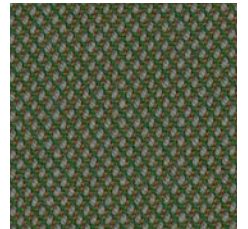
0133



0426



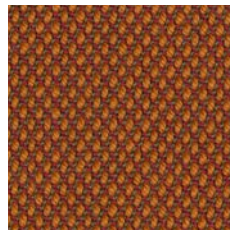
0645



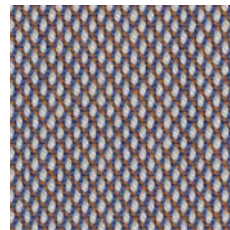
0946



0916



0576



0806



0966



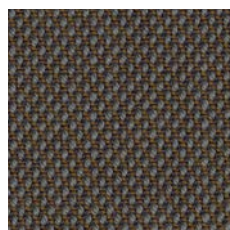
0476



0283

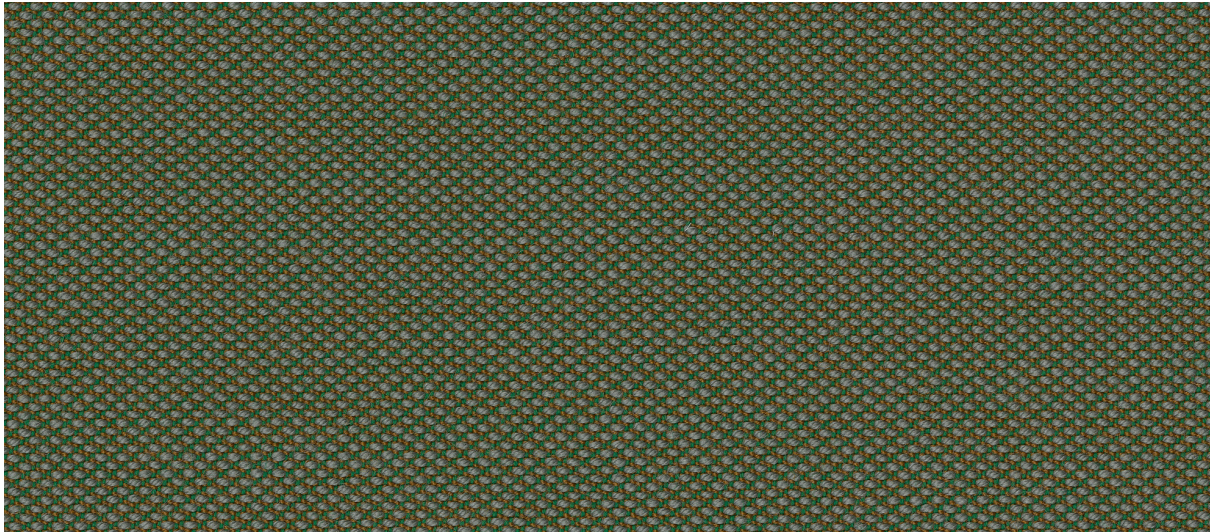


0883



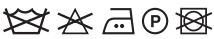
0376

Altri colori disponibili su richiesta / More colors available upon request



0946

<b>Composizione</b>	Nuova lana 90% Nylon 10%
<b>Peso</b>	550 gr/m <sup>2</sup>
<b>Altezza</b>	140 cm
<b>Resistenza all'abrasione Martindale ISO 12947-2</b>	100.000 cicli
<b>Solidità alla luce xeno - ISO 105 B02</b>	5-7
<b>Certificati di resistenza al fuoco</b>	UNI 9175 Classe 11M EN 1021-1+2:2013 BS 5852 IS CRIB 5 BS 5852 IS 1 NF-D 60-013:2006 B1-Q1 Önorm California TB 117:2013 FTP Code 307(88):10 Annex 1 Part. 8 NFPA 260 AS/NZS 1530.3-3837 Classe 2 ASTM E84 Classe B SN 198 898 5.3
<b>Certificato di assorbimento acustico</b>	UNI EN ISO 354:2003
<b>Certificato di resistenza acustica al flusso d'aria</b>	EN 29053
<b>Manutenzione</b>	 Pulire frequentemente con l'aspirapolvere. Rimuovere subito le macchie con acqua pulita tiepida o acqua gassata a temperatura tiepida e poco detergente
<b>Particolarità</b>	Fonoassorbente
<b>Indicato per uso contract</b>	Grado di resistenza all'uso: intenso ●●●○
<b>Attenzione</b>	I tessuti indoor direttamente esposti alla luce del sole a ridosso di vetrate sono soggetti a deterioramento

<b>Composition</b>	New wool 90% Nylon 10%
<b>Weight</b>	550 gr/m <sup>2</sup>
<b>Width</b>	140 cm
<b>Abrasion test Martindale ISO 12947-2</b>	100.000 cycles
<b>Lightfastness xeno - ISO 105 B02</b>	5-7
<b>Fiammability certificates</b>	UNI 9175 Class 11M EN 1021-1+2:2013 BS 5852 IS CRIB 5 BS 5852 IS 1 NF-D 60-013:2006 B1-Q1 Önorm California TB 117:2013 FTP Code 307(88):10 Annex 1 Part. 8 NFPA 260 AS/NZS 1530.3-3837 Class 2 ASTM E84 Class B SN 198 898 5.3
<b>Acoustic test sound absorption</b>	UNI EN ISO 354:2003
<b>Acoustic certificate air flow resistance</b>	EN 29053
<b>Maintenance</b>	 Vacuum clean frequently. Remove stains as soon as with clean warm water or sparkling water with lukewarm temperature and a low quantity of cleaning liquid
<b>Particularity</b>	Sound absorbing
<b>Fabric for commercial and Horeca use</b>	Wear and tear resistance: extreme ●●●○
<b>Warning</b>	Indoor fabrics that are exposed to direct sunlight close to windows are subject to deterioration

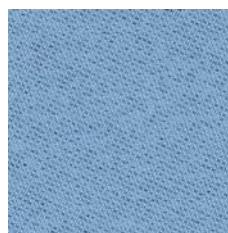




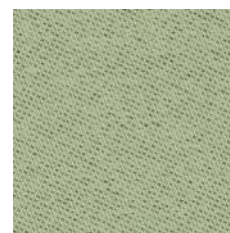
61174



63092



66172



68195



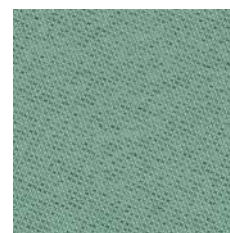
61172



64199



66176



68192



62086



64202



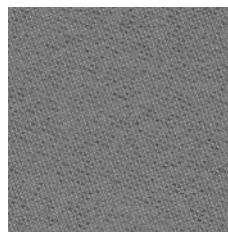
66174



68193



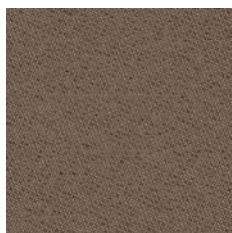
63099



60083



68198



61175

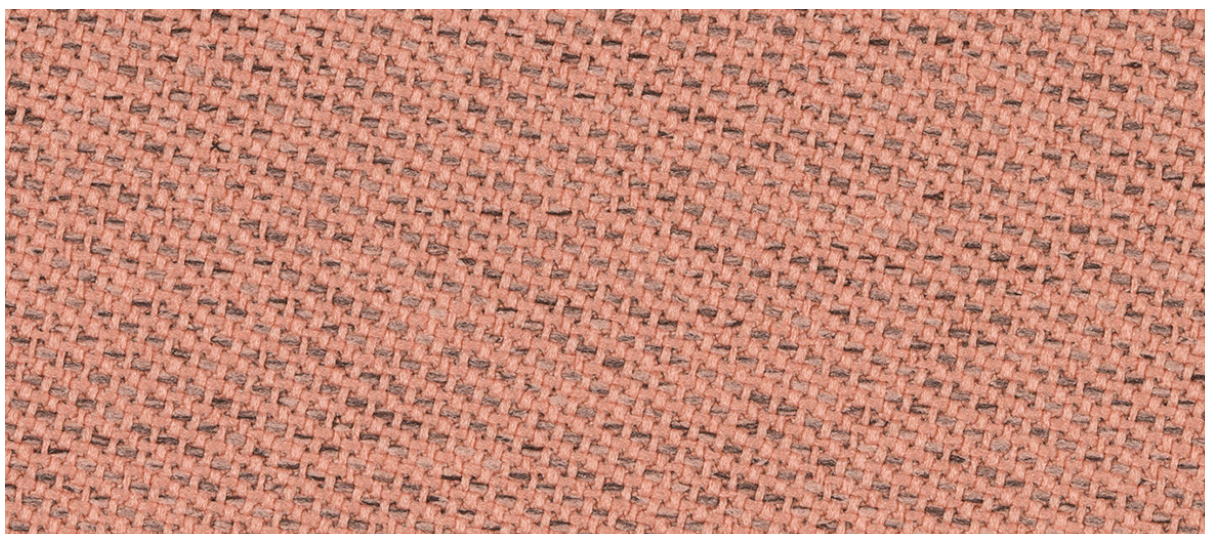


60081



65110

Altri colori disponibili su richiesta / More colors available upon request



63092

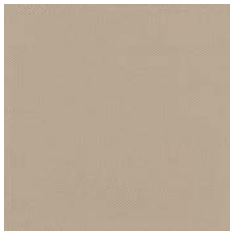
<b>Composizione</b>	Poliestere FR riciclato post-consumo 100% (FR in fibra)
<b>Peso</b>	335 gr/m <sup>2</sup>
<b>Altezza</b>	140 cm
<b>Resistenza all'abrasione Martindale ISO 12947-2</b>	60.000 cicli
<b>Doppio sfregamento Wyzenbeek ASTM D4157</b>	100.000 cicli
<b>Solidità alla luce xeno - ISO 105 B02</b>	5-8
<b>Certificati di resistenza al fuoco</b>	UNI 9175 Classe 1IM EN 1021-1+2:2013 EN 13501-1 <sup>12</sup> : B-s1, d0 NF-P 503/504/505 Classe M1 NF-D 60013 Classe AM18 DIN 4102 Classe B1 BS 5852 IS CRIB 5 BS 7176:2007 Medium Hazard California TB 117:2013
<b>Certificato di resistenza acustica al flusso d'aria</b>	EN 29053 ISO 9053-1
<b>Manutenzione</b>	60° restringimento max. 3%
<b>Particolarità</b>	Fonoassorbente. Tessuto creato interamente da bottiglie di plastica riciclata post-consumo
<b>Indicato per uso contract</b>	Grado di resistenza all'uso: ISO 12947-2 elevato ●●○○○ ASTM D4157 intenso ●●●○○
<b>Attenzione</b>	I tessuti indoor direttamente esposti alla luce del sole a ridosso di vetrate sono soggetti a deterioramento

<b>Composition</b>	Post-consumer recycled polyester FR 100% (FR inside the fiber)
<b>Weight</b>	335 gr/m <sup>2</sup>
<b>Width</b>	140 cm
<b>Abrasion test Martindale ISO 12947-2</b>	60.000 cycles
<b>Double rubs Wyzenbeek ASTM D4157</b>	100.000 cycles
<b>Lightfastness xeno - ISO 105 B02</b>	5-8
<b>Fiammability certificates</b>	UNI 9175 Class 1IM EN 1021-1+2:2013 EN 13501-1 <sup>12</sup> : B-s1, d0 NF-P 503/504/505 Class M1 NF-D 60013 Class AM18 DIN 4102 Class B1 BS 5852 IS CRIB 5 BS 7176:2007 Medium Hazard California TB 117:2013
<b>Acoustic certificate air flow resistance</b>	EN 29053 ISO 9053-1
<b>Maintenance</b>	60° shrinkage max. 3%
<b>Particularity</b>	Sound absorbing. Fabric created enterly from post-consumer recycled plastic bottles
<b>Fabric for commercial and Horeca use</b>	Wear and tear resistance: ISO 12947-2 high ●●○○○ ASTM D4157 extreme ●●●○○
<b>Warning</b>	Indoor fabrics that are exposed to direct sunlight close to windows are subject to deterioration

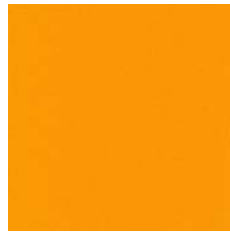




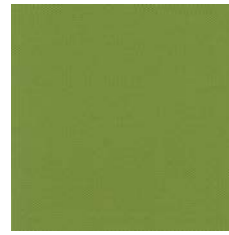
Jaquard



1010



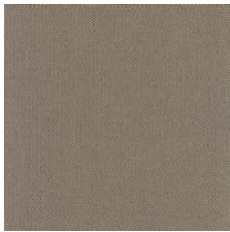
3008



7041



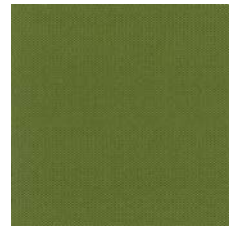
7045



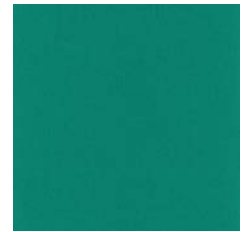
1510



3094



7541



6026



2521



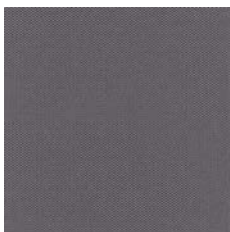
4046



7508



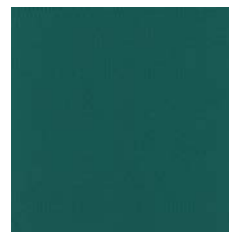
6526



8532



4028



7008

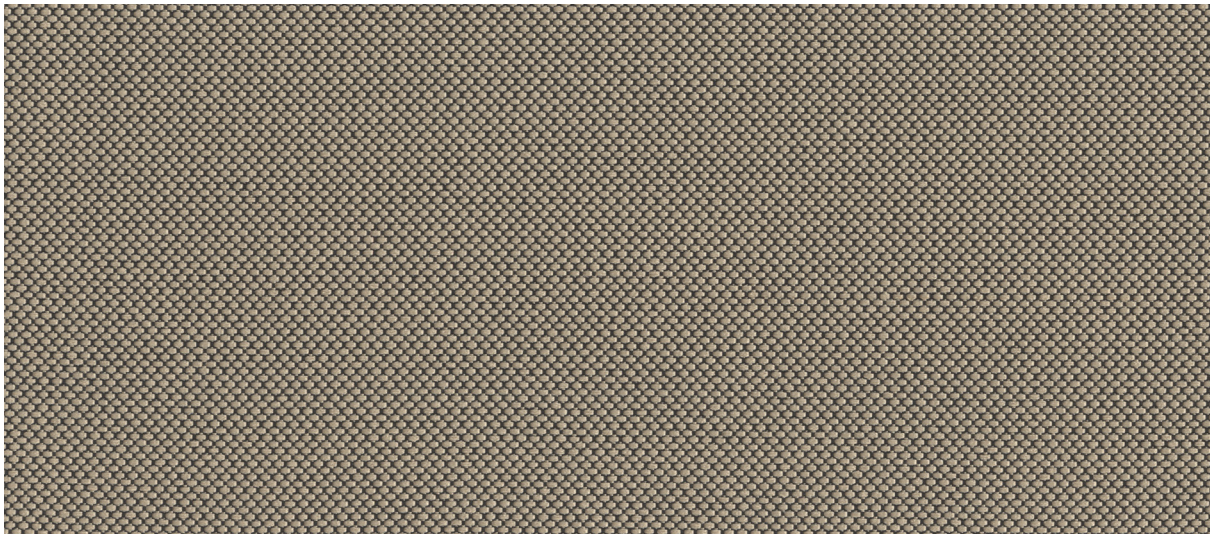


6571



8517

Altri colori disponibili su richiesta / More colors available upon request



1510

<b>Composizione</b>	Poliestere FR 100%
<b>Peso</b>	400 gr/m <sup>2</sup> ± 5%
<b>Altezza</b>	140 cm ± 2%
<b>Resistenza all'abrasione Martindale ISO 12947-2</b>	80.000 cicli ± 10%
<b>Solidità alla luce xeno - ISO 105 B02</b>	6
<b>Certificati di resistenza al fuoco</b>	UNI 9175 Classe 1IM UNI 9174-8456 Classe C1 EN 1021-1+2:2013 EN 13501-1 <sup>12</sup> : B-s1, d0 EN 13773 Classe 1 NF 92501-7 Classe M1 NF-D 60013 Classe AM18 DIN 4102 Classe B1 BS 5852 IS CRIB 5 BS 7176:2007 Medium Hazard B1-Q1-TR1 Önorm California TB 117:2013 NFPA 701 NFPA 260
<b>Manutenzione</b>	
<b>Indicato per uso contract</b>	Grado di resistenza all'uso: elevato ●●○○
<b>Attenzione</b>	I tessuti indoor direttamente esposti alla luce del sole a ridosso di vetrate sono soggetti a deterioramento

<b>Composition</b>	Polyester FR 100%
<b>Weight</b>	400 gr/m <sup>2</sup> ± 5%
<b>Width</b>	140 cm ± 2%
<b>Abrasion test Martindale ISO 12947-2</b>	80.000 cycles ± 10%
<b>Lightfastness xeno - ISO 105 B02</b>	6
<b>Fiammability certificates</b>	UNI 9175 Class 1IM UNI 9174-8456 Class C1 EN 1021-1+2:2013 EN 13501-1 <sup>12</sup> : B-s1, d0 EN 13773 Class 1 NF 92501-7 Class M1 NF-D 60013 Class AM18 DIN 4102 Class B1 BS 5852 IS CRIB 5 BS 7176:2007 Medium Hazard B1-Q1-TR1 Önorm California TB 117:2013 NFPA 701 NFPA 260
<b>Maintenance</b>	
<b>Particularity</b>	Wear and tear resistance: high ●●○○
<b>Warning</b>	Indoor fabrics that are exposed to direct sunlight close to windows are subject to deterioration

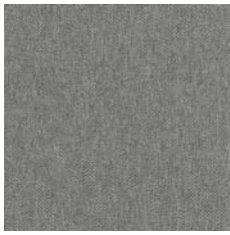




# MINI MELANGE

CAT. LUSO

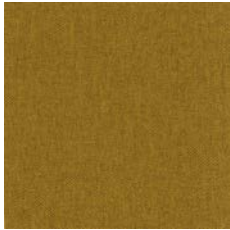
Jaquard



8504



1514



3508



4530



4503



6509



7522



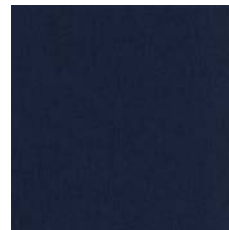
7509



6512



6504

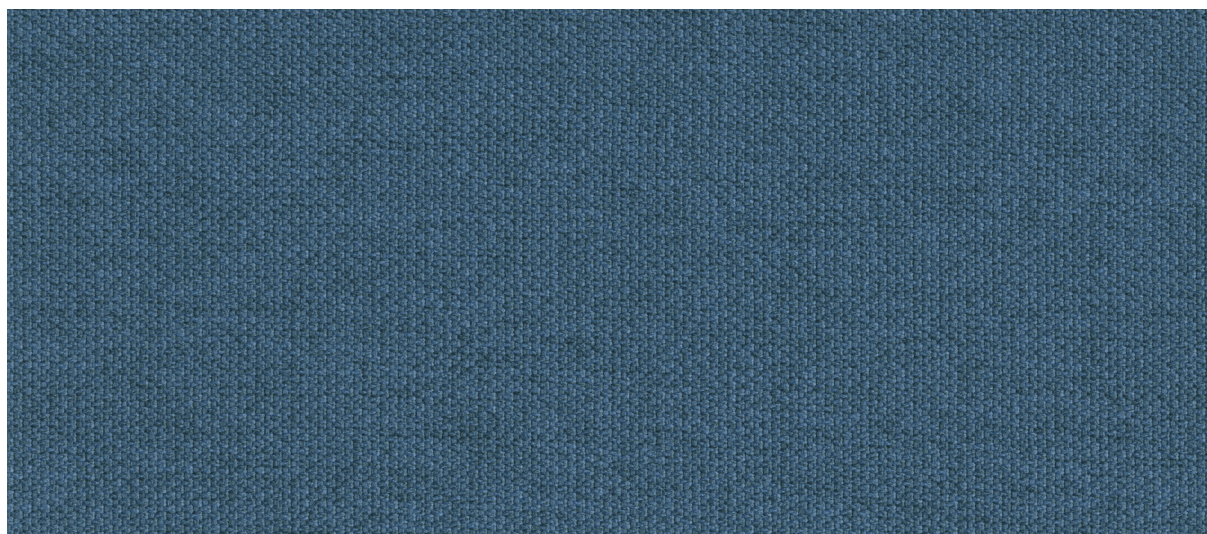


6515







7503

Altri colori disponibili su richiesta / More colors available upon request



6512

<b>Composizione</b>	Poliestere FR 100% 
<b>Peso</b>	340 gr/m <sup>2</sup> ± 5%
<b>Altezza</b>	140 cm ± 2%
<b>Resistenza all'abrasione Martindale ISO 12947-2</b>	100.000 cicli ± 10%
<b>Solidità alla luce xeno - ISO 105 B02</b>	6
<b>Certificati di resistenza al fuoco</b>	UNI 9175 Classe 1IM UNI 9174-8456 Classe C1 EN 1021-1+2:2014 EN 13773 Classe 1 NF-92501-7 Classe M1 NF-D 60013 Classe AM18 DIN 4102 Classe B1 BS 5852 IS CRIB 5 BS 7176:2006 Medium Hazard California TB 117:2013 NFPA 701 NFPA 260 B1-Q1-TR1 Önorm FTP Code 307(88):10 Annex 1 Part. 8
<b>Manutenzione</b>	
<b>Indicato per uso contract</b>	Grado di resistenza all'uso: intenso ●●●○
<b>Attenzione</b>	I tessuti indoor direttamente esposti alla luce del sole a ridosso di vetrate sono soggetti a deterioramento

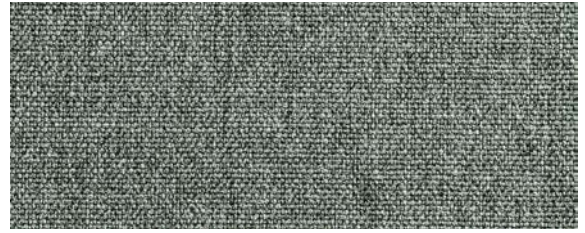
<b>Composition</b>	Polyester FR 100% 
<b>Weight</b>	340 gr/m <sup>2</sup> ± 5%
<b>Width</b>	140 cm ± 2%
<b>Abrasion test Martindale ISO 12947-2</b>	100.000 cycles ± 10%
<b>Lightfastness xeno - ISO 105 B02</b>	6
<b>Fiammability certificates</b>	UNI 9175 Class 1IM UNI 9174-8456 Class C1 EN 1021-1+2:2014 EN 13773 Class 1 NF-92501-7 Class M1 NF-D 60013 Class AM18 DIN 4102 Class B1 BS 5852 IS CRIB 5 BS 7176:2006 Medium Hazard California TB 117:2013 NFPA 701 NFPA 260 B1-Q1-TR1 Önorm FTP Code 307(88):10 Annex 1 Part. 8
<b>Maintenance</b>	
<b>Particularity</b>	Wear and tear resistance: extreme ●●●○
<b>Warning</b>	Indoor fabrics that are exposed to direct sunlight close to windows are subject to deterioration







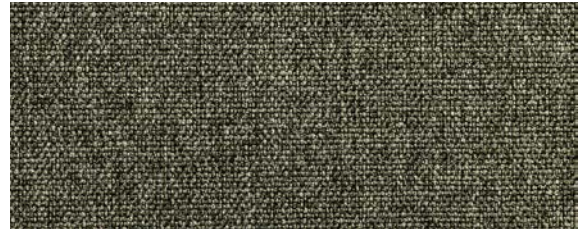
001



656



130



642



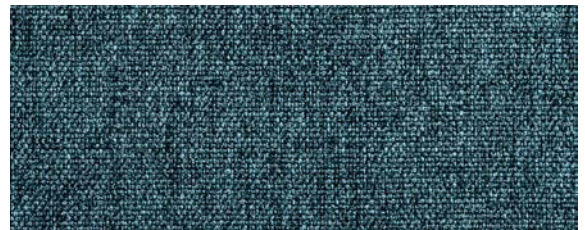
646



4010



010



643

Altri colori disponibili su richiesta / More colors available upon request



001

<b>Composizione</b>	Poliestere 100%
<b>Peso</b>	300 gr/m <sup>2</sup> ± 5%
<b>Altezza</b>	≥ 140 cm
<b>Resistenza all'abrasione Martindale ISO 12947-1-2</b>	75.000 cicli
<b>Solidità alla luce xeno - ISO 105 B02</b>	5
<b>Certificati di resistenza al fuoco</b>	UNI 9175 Classe 1IM BS 5852 IS 1
<b>Manutenzione</b>	
<b>Indicato per uso contract</b>	Grado di resistenza all'uso: elevato ●●○○
<b>Attenzione</b>	I tessuti indoor direttamente esposti alla luce del sole a ridosso di vetrate sono soggetti a deterioramento

<b>Composition</b>	Polyester 100%
<b>Weight</b>	300 gr/m <sup>2</sup> ± 5%
<b>Width</b>	≥ 140 cm
<b>Abrasion test Martindale ISO 12947-1-2</b>	75.000 cycles
<b>Lightfastness xeno - ISO 105 B02</b>	5
<b>Fiammability certificates</b>	UNI 9175 Classe 1IM BS 5852 IS 1
<b>Maintenance</b>	
<b>Particularity</b>	Wear and tear resistance: high ●●○○
<b>Warning</b>	Indoor fabrics that are exposed to direct sunlight close to windows are subject to deterioration



# PANAREA OUTDOOR



CAT. A

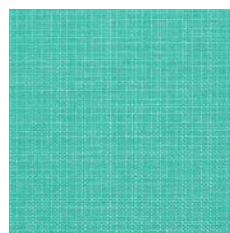
Jaquard



111



100



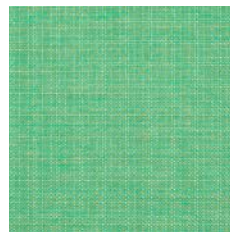
705



600



400



801



607

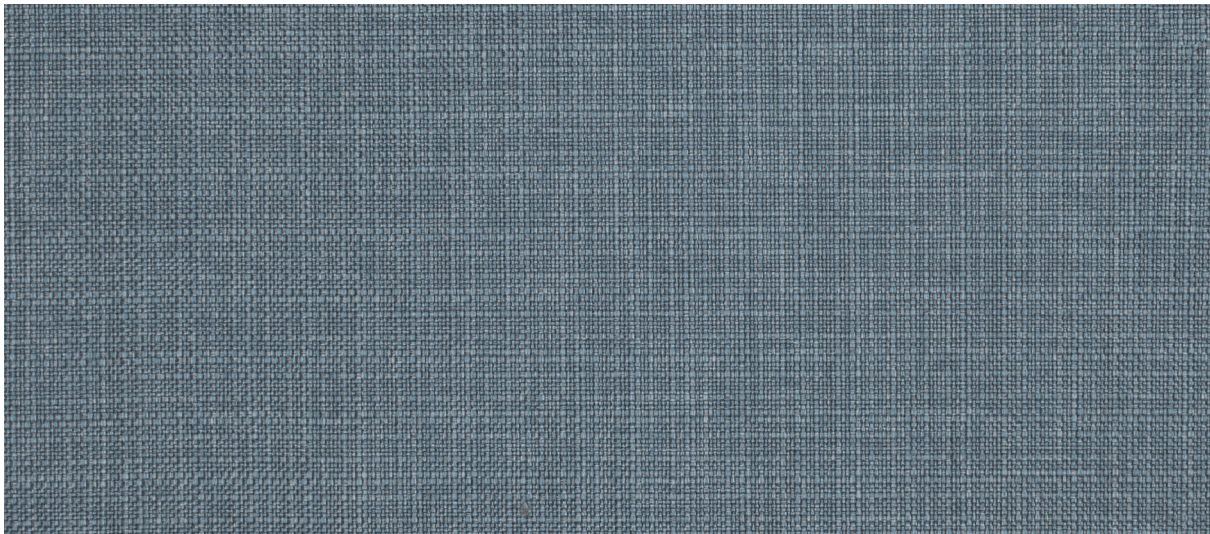


800





807

Altri colori disponibili su richiesta / More colors available upon request



607

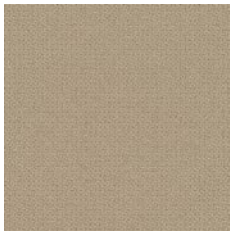
<b>Composizione</b>	Polipropilene 100%
<b>Peso</b>	200 gr/m <sup>2</sup>
<b>Altezza</b>	150 cm
<b>Resistenza all'abrasione Martindale ISO 12947-2</b>	> 40.000 cicli
<b>Solidità alla luce xeno - ISO 105 B04</b>	7-8
<b>Certificati di resistenza al fuoco</b>	NFPA 260
<b>Manutenzione</b>	
<b>Particolarità</b>	Outdoor, asciuga rapidamente. Reach conforme ed esente da Ftalati
<b>Indicato per uso contract</b>	Grado di resistenza all'uso: medio ●○○○
<b>Attenzione</b>	I tessuti indoor direttamente esposti alla luce del sole a ridosso di vetrate sono soggetti a deterioramento

<b>Composition</b>	Polypropylene 100%
<b>Weight</b>	200 gr/m <sup>2</sup>
<b>Width</b>	150 cm
<b>Abrasion test Martindale ISO 12947-2</b>	> 40.000 cycles
<b>Lightfastness xeno - ISO 105 B04</b>	7-8
<b>Fiammability certificates</b>	NFPA 260
<b>Maintenance</b>	
<b>Particularity</b>	Outdoor use, quick-drying. Reach complaint, Phthalate free
<b>Fabric for commercial and Horeca use</b>	Wear and tear resistance: medium ●○○○
<b>Warning</b>	Indoor fabrics that are exposed to direct sunlight close to windows are subject to deterioration

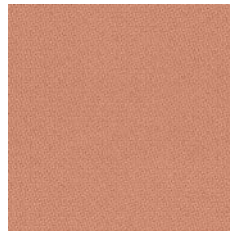


**OEKO-TEX®**  
CONFIDENCE IN TEXTILES  
**STANDARD 100**  
21CX00013 CENTROCOT  
Tested for harmful substances.  
www.oeko-tex.com/standard100

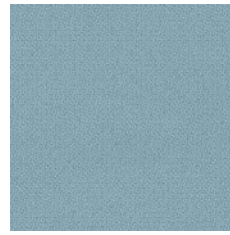




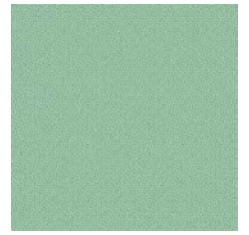
61149



64767



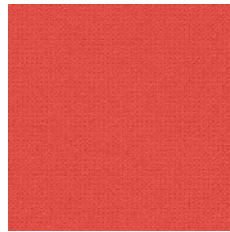
67004



68118



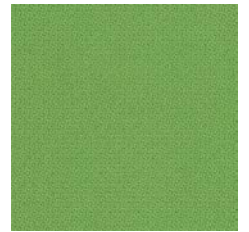
62057



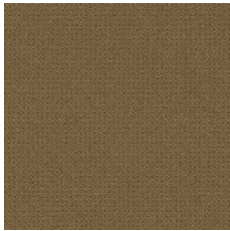
64178



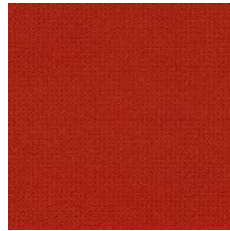
67072



68159



61003



63012



68158



68161



60021



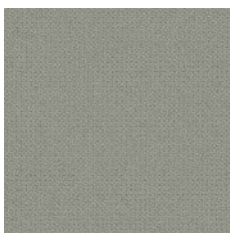
64013



66152



68798



60091



64159



66150



68119



66019



65047

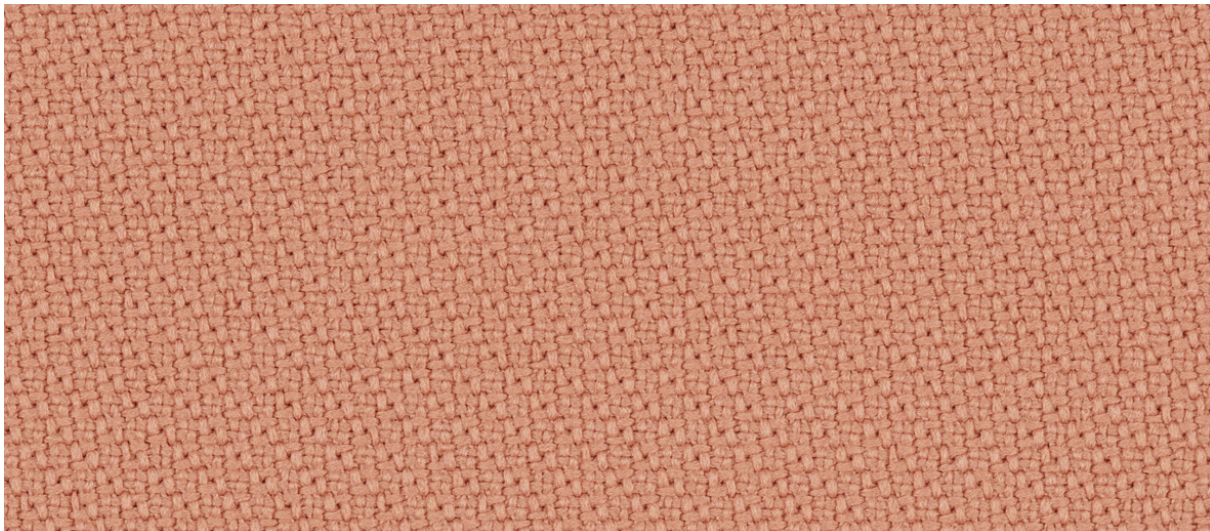


66148



68165

Altri colori disponibili su richiesta / More colors available upon request



64767

<b>Composizione</b>	Trevira cs 100%
<b>Peso</b>	335 gr/m <sup>2</sup>
<b>Altezza</b>	140 cm
<b>Resistenza all'abrasione</b>	
<b>Martindale ISO 12947-2</b>	100.000 cicli
<b>ASTM D4157</b>	100.000 cicli
<b>Solidità alla luce</b>	
<b>xeno - ISO 105 B02</b>	5-7
<b>Certificati di resistenza al fuoco</b>	UNI 9175 Classe 11M EN 1021-1+2:2013 EN 13501-1 <sup>2</sup> : B-s1, d0 NF-P 503/504/505 Classe M1 NF-D 60013 Classe AM18 DIN 4102 Classe B1 B1-Q1 Önorm BS 5852 IS CRIB 5 BS 7176:2007 Medium Hazard California TB 117:2013 FTP Code 307(88):10 Annex 1 Part. 8 MED certificate IMO FAR 25.853
<b>Certificato di assorbimento acustico</b>	CAN/ULC-S102.2-S109 UNI EN ISO 354:2003
<b>Certificato di resistenza acustica al flusso d'aria</b>	UNI EN ISO 11654 EN 29053 ISO 9053-1
<b>Manutenzione</b>	 60° restringimento max. 3%
<b>Particolarità</b>	Fonoassorbente
<b>Indicato per uso contract</b>	Grado di resistenza all'uso: intenso ●●●○
<b>Attenzione</b>	I tessuti indoor direttamente esposti alla luce del sole a ridosso di vetrate sono soggetti a deterioramento

<b>Composition</b>	Trevira cs 100%
<b>Weight</b>	335 gr/m <sup>2</sup>
<b>Width</b>	140 cm
<b>Abrasion test</b>	
<b>Martindale ISO 12947-2</b>	100.000 cycles
<b>ASTM D4157</b>	100.000 cycles
<b>Lightfastness</b>	
<b>xeno - ISO 105 B02</b>	5-7
<b>Fiammability certificates</b>	UNI 9175 Class 11M EN 1021-1+2:2013 EN 13501-1 <sup>2</sup> : B-s1, d0 NF-P 503/504/505 Class M1 NF-D 60013 Class AM18 DIN 4102 Class B1 B1-Q1 Önorm BS 5852 IS CRIB 5 BS 7176:2007 Medium Hazard California TB 117:2013 FTP Code 307(88):10 Annex 1 Part. 8 MED certificate IMO FAR 25.853
<b>Acoustic test sound absorption</b>	CAN/ULC-S102.2-S109 UNI EN ISO 354:2003
<b>Acoustic certificate air flow resistance</b>	UNI EN ISO 11654 EN 29053 ISO 9053-1
<b>Maintenance</b>	 60° shrinkage max. 3%
<b>Particularity</b>	Sound absorbing
<b>Fabric for commercial and Horeca use</b>	Wear and tear resistance: extreme ●●●○
<b>Warning</b>	Indoor fabrics that are exposed to direct sunlight close to windows are subject to deterioration





1001



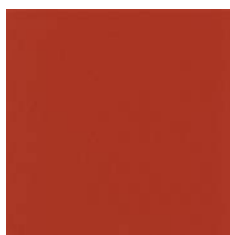
3530



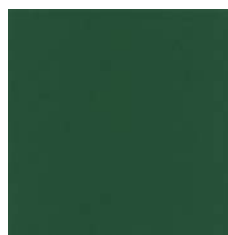
7521



1006



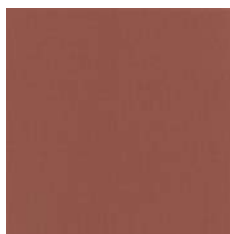
4066



7029



2519



4037



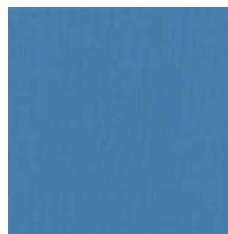
7026



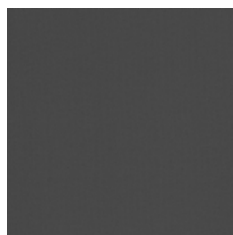
8504



4067



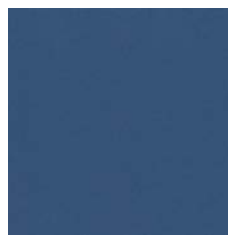
6024



8017



4021

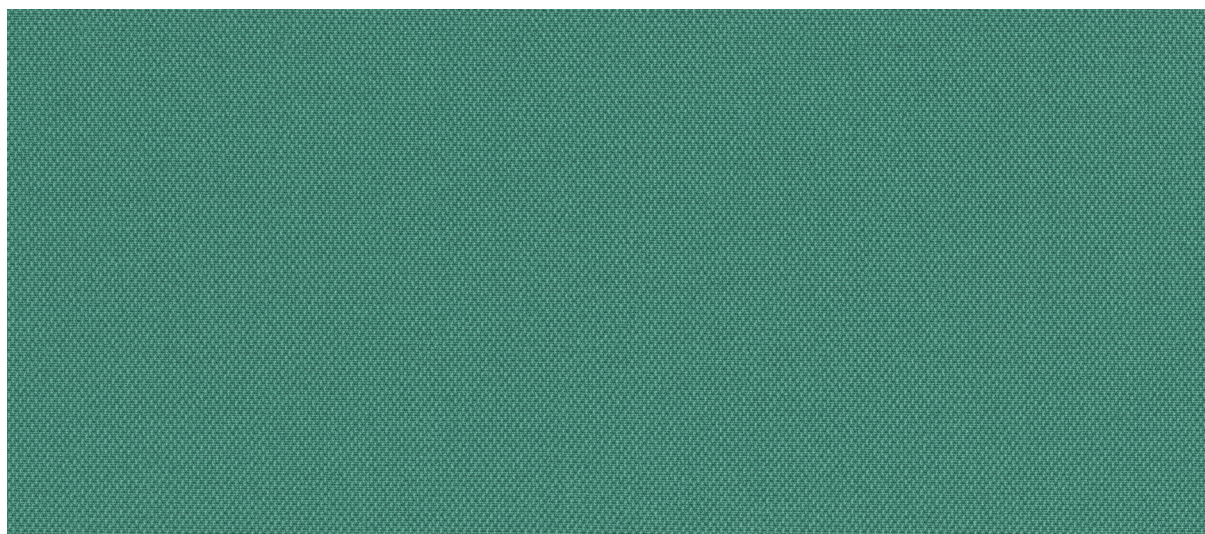


6512



4503

Altri colori disponibili su richiesta / More colors available upon request



7026

<b>Composizione</b>	Poliestere riciclato 100%
<b>Peso</b>	350 gr/m <sup>2</sup> ± 5%
<b>Altezza</b>	150 cm ± 5%
<b>Resistenza all'abrasione Martindale ISO 12947-2</b>	100.000 cicli ± 10%
<b>Solidità alla luce xeno - ISO 105 B02</b>	6
<b>Certificati di resistenza al fuoco</b>	UNI 9175 Classe 1IM EN 1021-1+2:2014 BS 5852 IS CRIB 5 BS 7176:2007 Medium Hazard California TB 117:2013 FTP Code 307(88):10 Annex 1 Part. 8
<b>Certificato di assorbimento acustico</b>	UNI EN ISO 354:2003
<b>Manutenzione</b>	
<b>Particolarità</b>	Fonoassorbente. Tessuto creato interamente da bottiglie di plastica riciclata post-consumo
<b>Indicato per uso contract</b>	Grado di resistenza all'uso: intenso ●●●○
<b>Attenzione</b>	I tessuti indoor direttamente esposti alla luce del sole a ridosso di vetrate sono soggetti a deterioramento

<b>Composition</b>	Recycled polyester 100%
<b>Weight</b>	350 gr/m <sup>2</sup> ± 5%
<b>Width</b>	150 cm ± 5%
<b>Abrasion test Martindale ISO 12947-2</b>	100.000 cycles ± 10%
<b>Lightfastness xeno - ISO 105 B02</b>	6
<b>Fiammability certificates</b>	UNI 9175 Class 1IM EN 1021-1+2:2014 BS 5852 IS CRIB 5 BS 7176:2007 Medium Hazard California TB 117:2013 FTP Code 307(88):10 Annex 1 Part. 8
<b>Acoustic test sound absorption</b>	UNI EN ISO 354:2003
<b>Maintenance</b>	
<b>Particularity</b>	Sound absorbing. Fabric created entirely from post-consumer recycled plastic bottles
<b>Fabric for commercial and Horeca use</b>	Wear and tear resistance: extreme ●●●○
<b>Warning</b>	Indoor fabrics that are exposed to direct sunlight close to windows are subject to deterioration



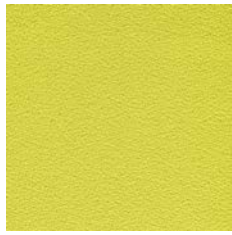




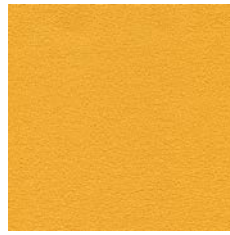
# MIRAGE

CAT. LUSSO

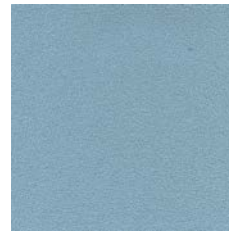
Crêpe bielastico / Bi-elastic crêpe



462



53



386



516



425



133



378



532



464



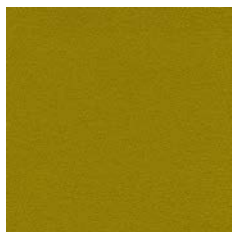
119



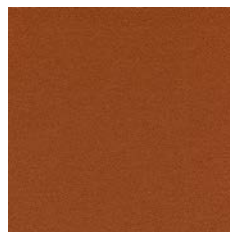
263



569



426



572



334



643



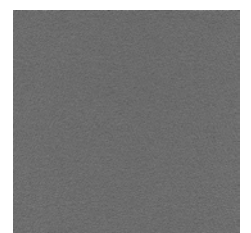
443



180



175



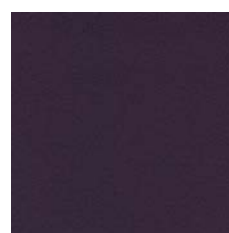
636



496



236



262



607

Altri colori disponibili su richiesta / More colors available upon request

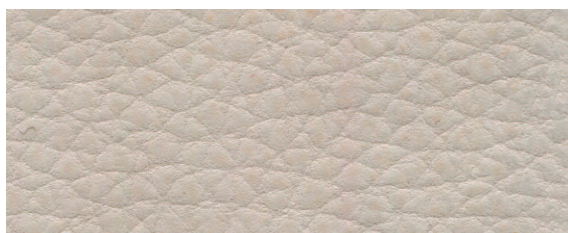


533

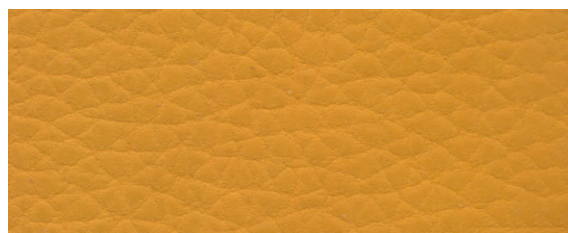
<b>Composizione</b>	Poliestere FR 100%
<b>Peso</b>	330 gr/m <sup>2</sup> ± 10%
<b>Altezza</b>	140 cm ± 2%
<b>Resistenza all'abrasione Martindale ISO 12947-2</b>	100.000 cicli ± 20%
<b>Solidità alla luce xeno - ISO 105 B02</b>	6 ± 1
<b>Certificati di resistenza al fuoco</b>	UNI 9175 Classe 1IM EN 1021-1+2:2014 EN 13773 Classe 1 EN 13501-1 EN ISO 6940/6941 NF-D 60 Classe M1 DIN 4102 Classe B1 B1-Q1 Önorm BS 5852 IS CRIB 5 California TB 117:2013 Azimut MED 3:19-3:21/MED annex A.1 FAR 25.853 Fire Protection Classification: 5.3
<b>Certificato di assorbimento acustico</b>	UNI EN ISO 354:2003
<b>Certificato di resistenza acustica al flusso d'aria</b>	ISO 9053-2:2020
<b>Manutenzione</b>	 Non spazzolare. Usare con regolarità l'aspirapolvere a beccuccio liscio
<b>Particolarità</b>	Fonoassorbente. Bielastico, adatto per rivestire forme stondate
<b>Indicato per uso contract</b>	Grado di resistenza all'uso: intenso ●●●○
<b>Attenzione</b>	I tessuti indoor direttamente esposti alla luce del sole a ridosso di vetrate sono soggetti a deterioramento

<b>Composition</b>	Polyester FR 100%
<b>Weight</b>	330 gr/m <sup>2</sup> ± 10%
<b>Width</b>	140 cm ± 2%
<b>Abrasion test Martindale ISO 12947-2</b>	100.000 cycles ± 20%
<b>Lightfastness xeno - ISO 105 B02</b>	6 ± 1
<b>Fiammability certificates</b>	UNI 9175 Class 1IM EN 1021-1+2:2014 EN 13773 Class 1 EN 13501-1 EN ISO 6940/6941 NF-D 60 Class M1 DIN 4102 Class B1 B1-Q1 Önorm BS 5852 IS CRIB 5 California TB 117:2013 Azimut MED 3:19-3:21/MED annex A.1 FAR 25.853 Fire Protection Classification: 5.3
<b>Acoustic test sound absorption</b>	UNI EN ISO 354:2003
<b>Acoustic certificate air flow resistance</b>	ISO 9053-2:2020
<b>Maintenance</b>	 Do not brush. Use vacuum-cleaner with smooth spout regularly
<b>Particularity</b>	Sound absorbing. Bi-elastic, suitable for rounded shapes
<b>Fabric for commercial and Horeca use</b>	Wear and tear resistance: extreme ●●●○
<b>Warning</b>	Indoor fabrics that are exposed to direct sunlight close to windows are subject to deterioration





06 PANNA



17 GIALLO



01 SABBIA



18 SENAPE



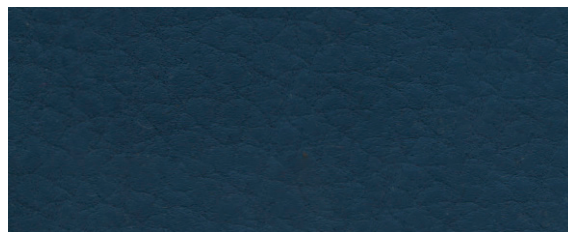
02 BEIGE



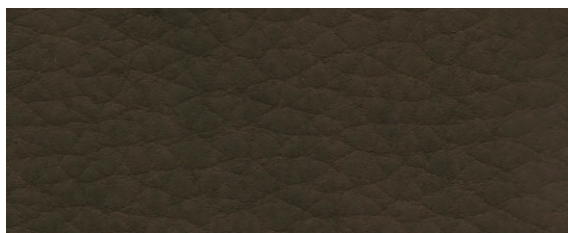
05 OLIVA



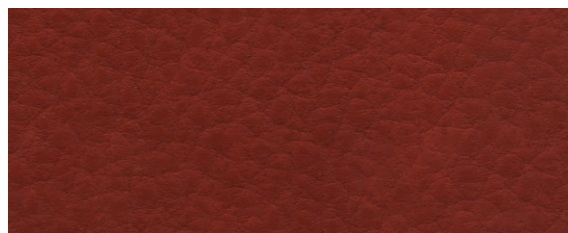
07 GRIGIO



11 BLU



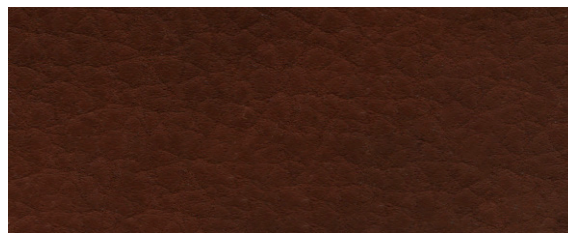
03 NOCCIOLA



21 MATTONE



08 FANGO



04 TERRA

Altri colori disponibili su richiesta / More colors available upon request



02 BEIGE

<b>Composizione</b>	<b>SPALMATURA</b>	PVC 100%
	<b>SUPPORTO</b>	Poliestere 50% Cotone 50%

<b>Composition</b>	<b>COATING</b>	PVC 100%
	<b>SUPPORT</b>	Polyester 50% Cotton 50%

<b>Peso</b>	720 gr/m <sup>2</sup> ± 5%
-------------	----------------------------

<b>Weight</b>	720 gr/m <sup>2</sup> ± 5%
---------------	----------------------------

<b>Altezza</b>	138-140 cm
----------------	------------

<b>Width</b>	138-140 cm
--------------	------------

<b>Resistenza all'abrasione Martindale ISO 5470-2</b>	50.000 cicli
---	--------------

<b>Abrasion test Martindale ISO 5470-2</b>	50.000 cycles
--	---------------

<b>Solidità alla luce xeno - ISO 4582/4892</b>	> 4
--	-----

<b>Lightfastness xeno - ISO 4582/4892</b>	> 4
---	-----

<b>Certificati di resistenza al fuoco</b>	UNI 9175 Classe 1IM
	UNI ISO 3795:1992
	FMVSS 302

<b>Fiammability certificates</b>	UNI 9175 Class 1IM
	UNI ISO 3795:1992
	FMVSS 302



Pulire con panno inumidito ed insaponato con sapone neutro. Non usare candeggina. Pulire delicatamente e risciacquare con acqua tiepida

**Manutenzione**



Clean it with a soft cloth soaked with mild soap. Do not use bleach. Clean it gently and rinse it with lukewater

**Maintenance**

<b>Particolarità</b>	Tessuto spalmato effetto invecchiato. Le sfumature sono volutamente non uniformi e posso essere differenti nelle varie partite.
	Reach conforme e privo di SVHC, formaldeide ed altre sostanze nocive

<b>Particularity</b>	Aged-looking faux leather. The shades are deliberately uneven and every batch can be slightly different from the others.
	Reach complaint and SVHC free without formaldehyde and other harmful substances

<b>Indicato per uso contract</b>	Grado di resistenza all'uso: elevato ●●○○
----------------------------------	--

<b>Fabric for commercial and Horeca use</b>	Wear and tear resistance: high ●●○○
---	--

Il tessuto spalmato ha caratteristiche di assorbenza ed è soggetta a trasferimenti di colore. Si potrebbe macchiare indelebilmente in caso di: contatto con materiali e tessuti scuri, jeans blu/neri o capi di abbigliamento non trattati e inchiostro di penna. La garanzia sul prodotto non copre questo tipo di danni

Faux leather absorbs easily and is subject to color transfer. It may be indelibly stained if it comes into contact with: dark fabrics and faux leather, blue/black jeans or untreated clothes and pen ink. The product warranty does not cover this type of damages

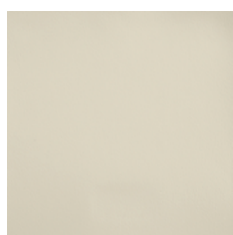
**Attenzione**

I tessuti indoor direttamente esposti alla luce del sole a ridosso di vetrate sono soggetti a deterioramento

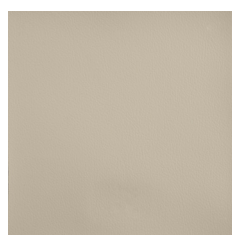
**Warning**

Indoor fabrics that are exposed to direct sunlight close to windows are subject to deterioration

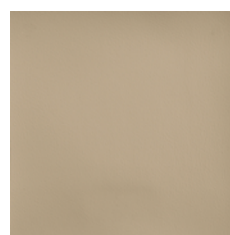




D18



D27



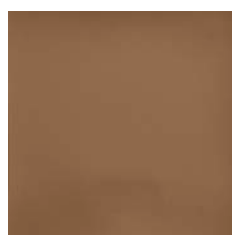
DB2



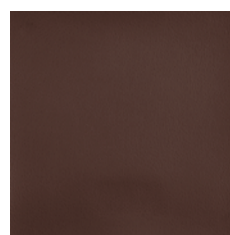
FD5



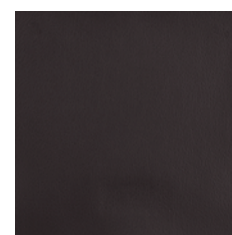
D37



E16



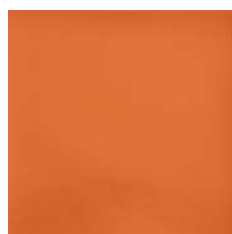
F42



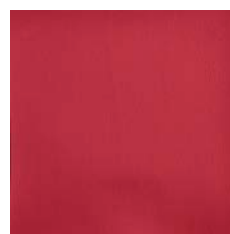
F84



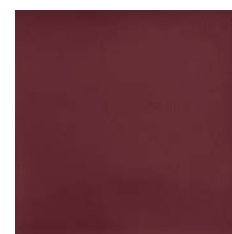
Q73



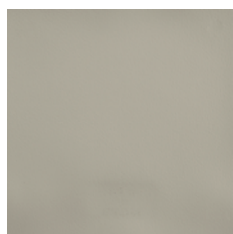
CA9



CD6



F71



BA8



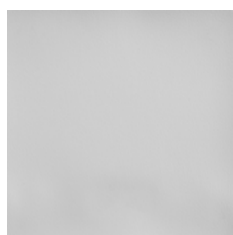
CD5



EB2



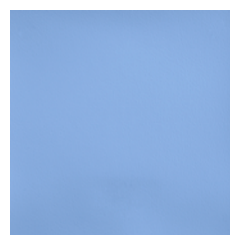
EZ5



B41



GB5



G03



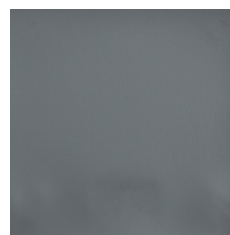
HA4



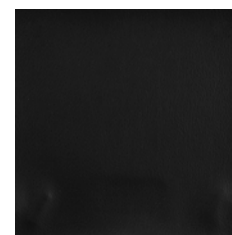
P35



BB3

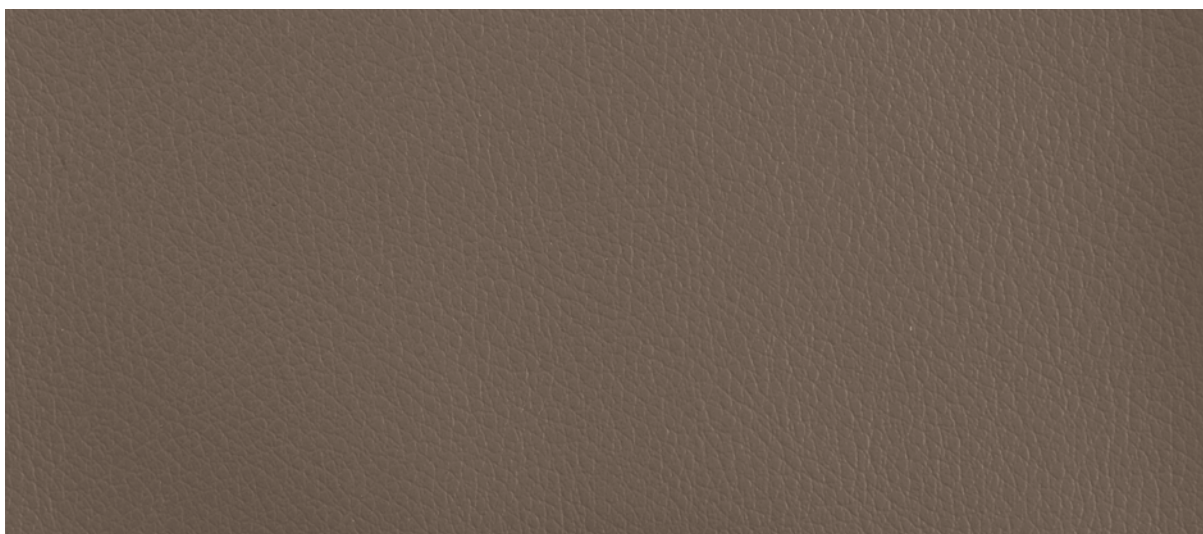


M31



B99

Altri colori disponibili su richiesta / More colors available upon request



FD5

**Composizione** Spalmato PVC 90%  
Supporto poliammide 10%


**Peso** 710 gr/m<sup>2</sup> + 5%

**Altezza** 138 cm + 5%

**Resistenza all'abrasione  
Martindale ISO 5470-2** 100.000 cicli

**Solidità alla luce  
xeno - ISO 105 B02** 4-5

**Certificati di  
resistenza al fuoco** UNI 9175 Classe 11M  
UNI 1021-1+2:2014  
BS 5852 IS 1+2  
BS 5852 IS CRIB 5  
IMO RES.MSC 61 (16)  
FMVSS 302  
FAR 25.853

**Manutenzione**   
Pulire con panno o spugna inumiditi e detergente neutro. Non usare alcol, solventi e candeggine o altri prodotti corrosivi

**Particolarità** Outdoor, impermeabile, antibatterico, antimuffa, antimicrobico e idrorepellente. Reach conforme, esente da Ftalati e DOP

**Indicato per uso contract** Grado di resistenza all'uso:  
intenso ●●●○

Il tessuto spalmato ha caratteristiche di assorbenza ed è soggetta a trasferimenti di colore. Si potrebbe macchiare indelebilmente in caso di: contatto con materiali e tessuti scuri, jeans blu/neri o capi di abbigliamento non trattati e inchiostro di penna. La garanzia sul prodotto non copre questo tipo di danni

**Attenzione** I tessuti indoor direttamente esposti alla luce del sole a ridosso di vetrate sono soggetti a deterioramento

**Composition** PVC coating 90%  
Nylon backing 10%


**Weight** 710 gr/m<sup>2</sup> + 5%

**Width** 138 cm + 5%

**Abrasion test  
Martindale ISO 5470-2** 100.000 cycles

**Lightfastness  
xeno - ISO 105 B02** 4-5

**Fiammability  
certificates** UNI 9175 Class 11M  
UNI 1021-1+2:2014  
BS 5852 IS 1+2  
BS 5852 IS CRIB 5  
IMO RES.MSC 61 (16)  
FMVSS 302  
FAR 25.853

**Maintenance**   
Clean with cloth or sponge imngued with mild soap. Do not use alcohol, solvents and bleaches, or other corrosive detergents

**Particularity** Outdoor, waterproof, antibacterial, anti-mold, antimicrobial and water repellent. Reach complaint, Phthalate and DOP free

**Fabric for commercial  
and Horeca use** Wear and tear resistance:  
extreme ●●●○

Faux leather absorbs easily and is subject to color transfer. It may be indelibly stained if it comes into contact with: dark fabrics and faux leather, blue/black jeans or untreated clothes and pen ink. The product warranty does not cover this type of damages

**Warning** Indoor fabrics that are exposed to direct sunlight close to windows are subject to deterioration

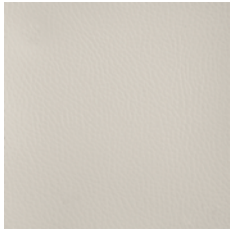




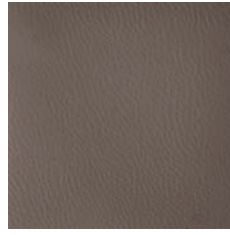
# ZEUS

CAT. A

Spalmato / Faux leather



102



108



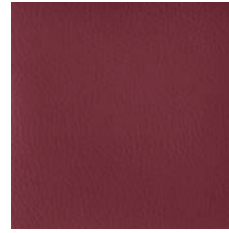
114



110



113



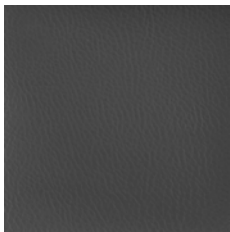
112



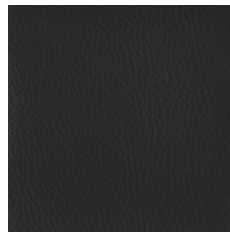
116



117



121



122

Altri colori disponibili su richiesta / More colors available upon request



110

<b>Composizione</b>	PVC 84% Poliuretano 2% Poliestere 7% Cotone 7%
---------------------	---

<b>Peso</b>	620 gr/m <sup>2</sup> ± 5%
-------------	----------------------------

<b>Altezza</b>	140 cm ± 5%
----------------	-------------

<b>Resistenza all'abrasione Martindale ISO 5470-2</b>	< 50.000 cicli
---	----------------

<b>Solidità alla luce xeno - ISO 105 B02</b>	4
--	---

<b>Certificati di resistenza al fuoco</b>	UNI 9175 Classe 1IM EN 1021-1+2:2014 BS 5852 IS CRIB 5
---	--

<b>Manutenzione</b>	<p>Pulire con panno inumidito ed insaponato con sapone neutro. Non usare candeggine. Non sfregare energicamente e risciacquare con acqua tiepida</p>
---------------------	--

<b>Indicato per uso contract</b>	Grado di resistenza all'uso: elevato ●●○○
----------------------------------	--

Il tessuto spalmato ha caratteristiche di assorbenza ed è soggetta a trasferimenti di colore. Si potrebbe macchiare indelebilmente in caso di: contatto con materiali e tessuti scuri, jeans blu/neri o capi di abbigliamento non trattati e inchiostro di penna. La garanzia sul prodotto non copre questo tipo di danni

**Attenzione**  
I tessuti indoor direttamente esposti alla luce del sole a ridosso di vetrate sono soggetti a deterioramento

<b>Composition</b>	PVC 84% Polyurethane 2% Polyester 7% Cotton 7%
--------------------	---

<b>Weight</b>	620 gr/m <sup>2</sup> ± 5%
---------------	----------------------------

<b>Width</b>	140 cm ± 5%
--------------	-------------

<b>Abrasion test Martindale ISO 5470-2</b>	< 50.000 cycles
--	-----------------

<b>Lightfastness xeno - ISO 105 B02</b>	4
---	---

<b>Fiammability certificates</b>	UNI 9175 Class 1IM EN 1021-1+2:2014 BS 5852 IS CRIB 5
--------------------------------------	---

<b>Maintenance</b>	<p>Clean it with a soft cloth soaked with mild soap. Do not use bleach. Do not rub vigorously and rinse with lukewarm water</p>
--------------------	---

<b>Fabric for commercial and Horeca use</b>	Wear and tear resistance: high ●●○○
---	--

Faux leather absorbs easily and is subject to color transfer. It may be indelibly stained if it comes into contact with: dark fabrics and faux leather, blue/black jeans or untreated clothes and pen ink. The product warranty does not cover this type of damages

**Warning**  
Indoor fabrics that are exposed to direct sunlight close to windows are subject to deterioration

